

**Outer Radiation Belt Flux and Phase Space Density Response to Sheath Regions:
Van Allen Probes and GPS Observations**

Milla M. H. Kalliokoski¹, Michael G. Henderson², Steven K. Morley², Emilia K. J. Kilpua¹,
Adnane Osmane¹, Leonid Olifer³, Drew L. Turner⁴, Allison N. Jaynes⁵, Harriet George¹,
Sanni Hoilijoki¹, Lucile Turc¹, Minna Palmroth^{1,6}

¹Department of Physics, University of Helsinki, Helsinki, Finland

²Space Science and Applications, Los Alamos National Laboratory, Los Alamos, New Mexico, USA

³Department of Physics, University of Alberta, Edmonton, Alberta, Canada

⁴Johns Hopkins University Applied Physics Laboratory, Laurel, Maryland, USA

⁵Department of Physics and Astronomy, University of Iowa, Iowa City, Iowa, USA

⁶Space and Earth Observation Centre, Finnish Meteorological Institute, Helsinki, Finland

Contents of this file

Figures S1 to S3

Introduction

The figures presented here show additional response data and corresponding Pearson correlation coefficients that complement the main article.

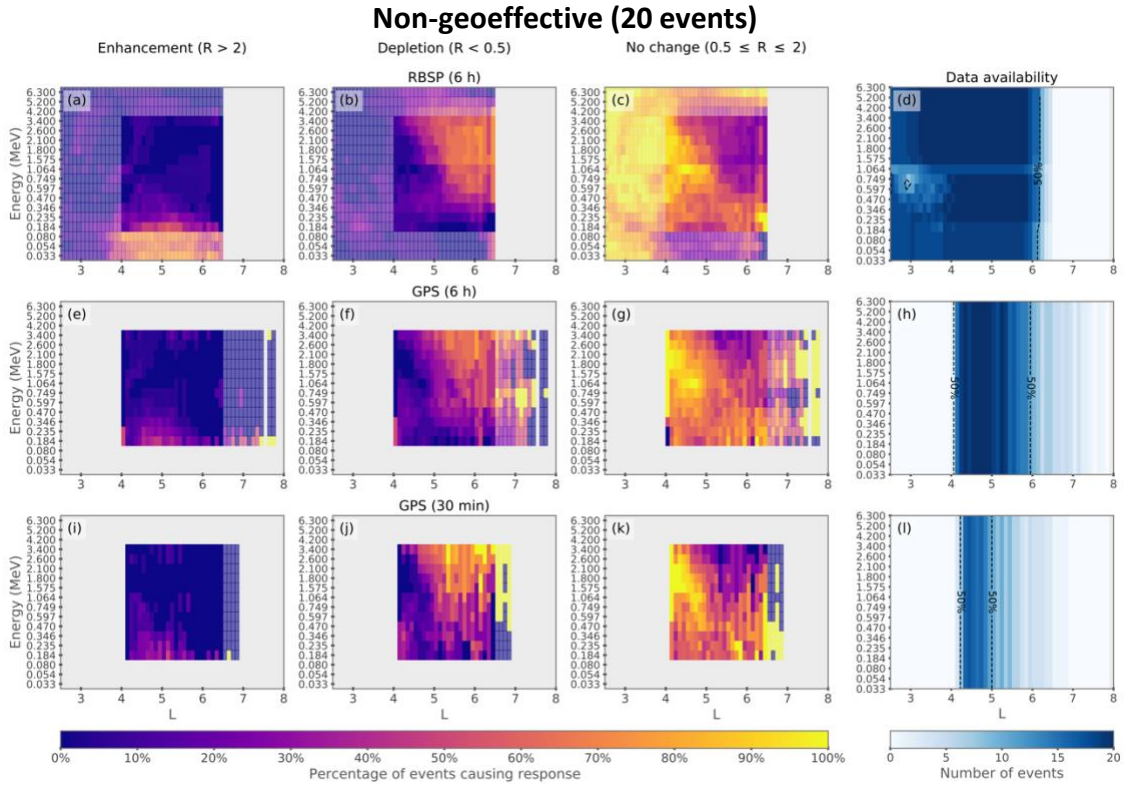
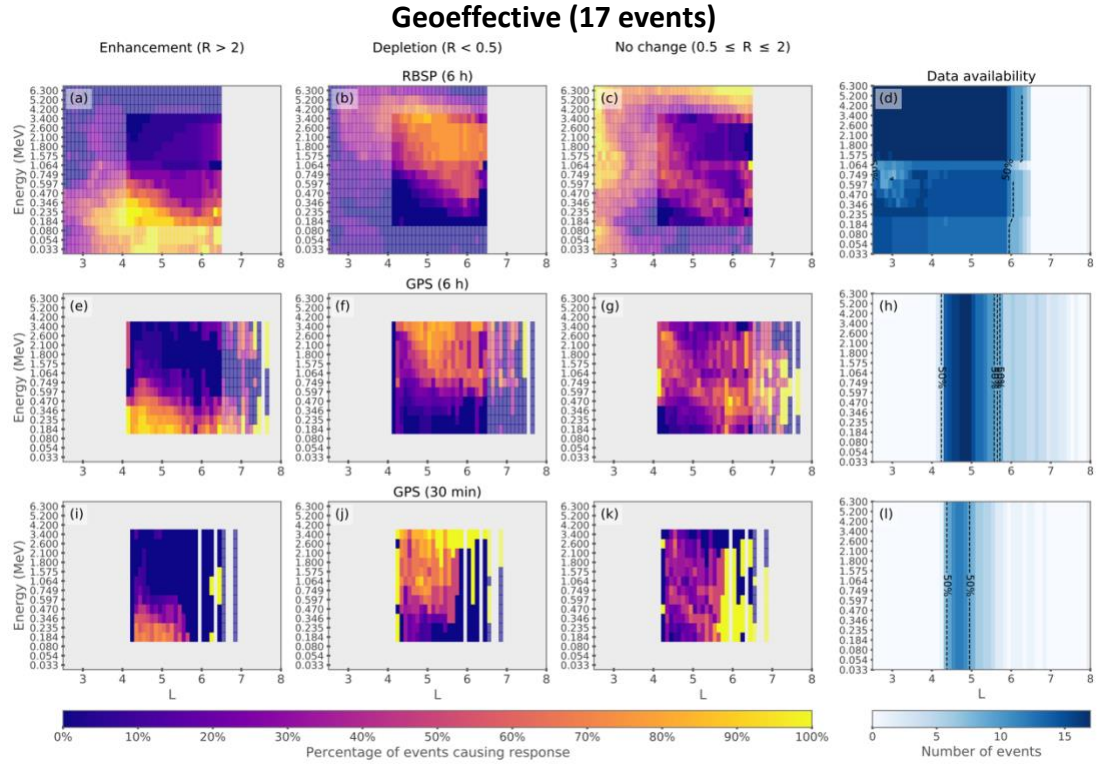


Figure S1. Same as Figure 2 but electron flux response is shown separately for (top) geoeffective and (bottom) non-geoeffective sheaths.

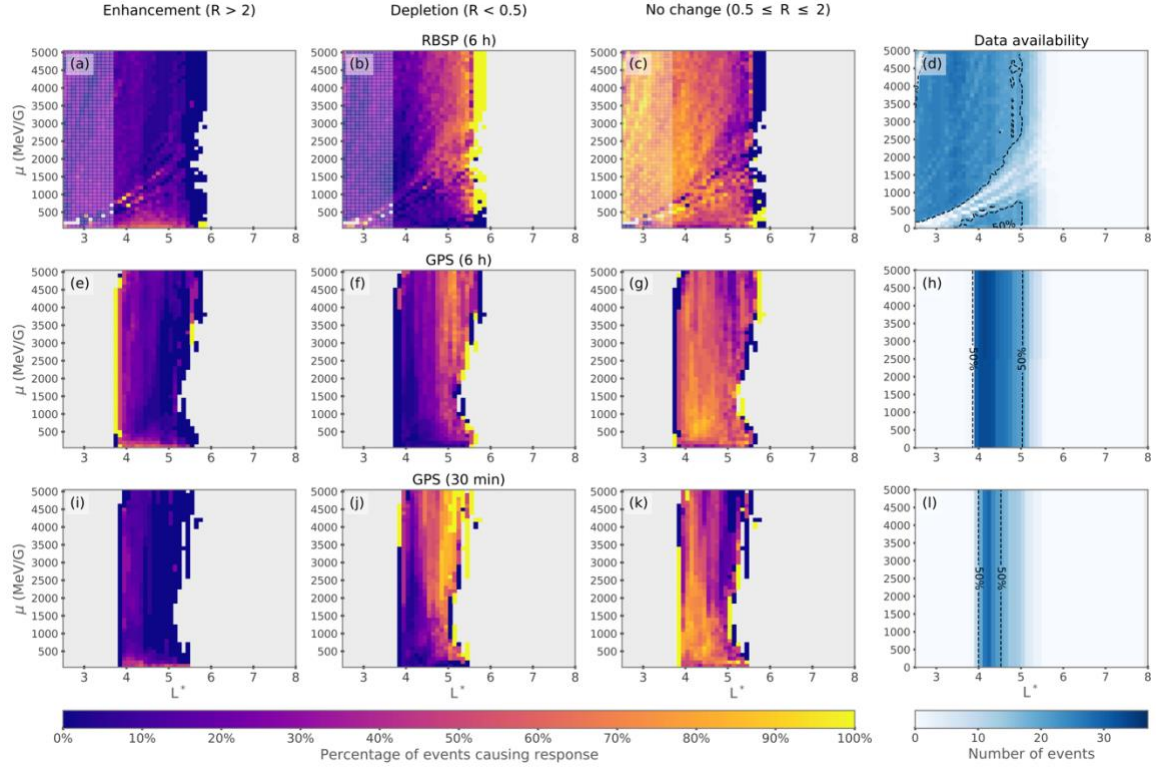


Figure S2. Same as Figure 4 but the response is for all sheath events.

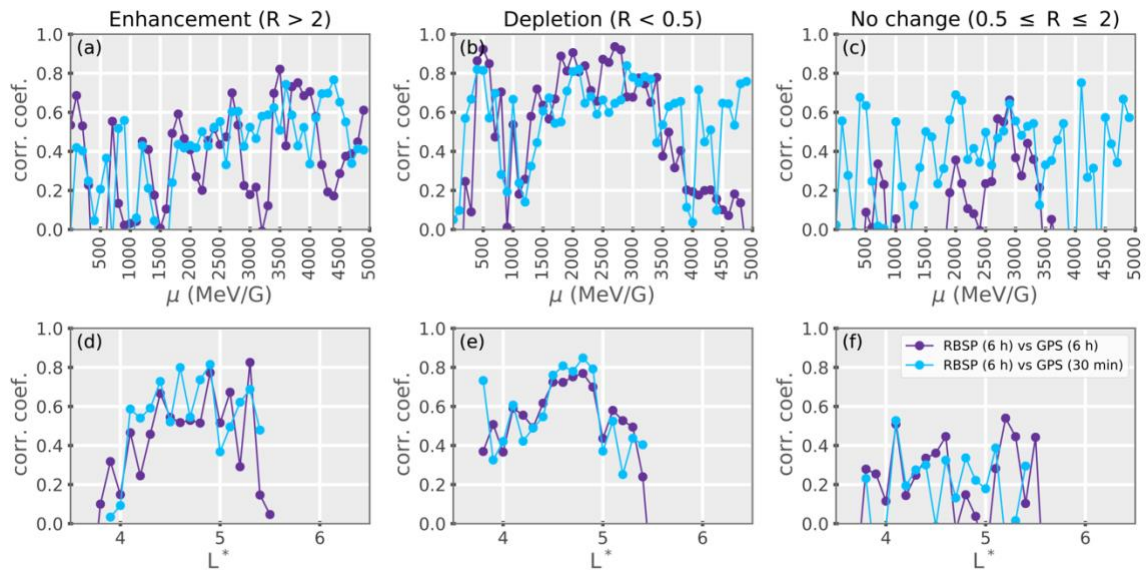


Figure S3. Pearson correlation coefficient corresponding to Figure S2.