

# Supporting Information for "Modeling the economic and environmental impacts of land scarcity under deep uncertainty"

Flannery Dolan, Jonathan Lamontagne, Katherine Calvin, Abigail Snyder,

Kanishka Narayan, Alan V. Di Vittorio, Chris R. Vernon

<sup>1</sup>Department of Civil and Environmental Engineering, Tufts University, Medford, MA, USA

<sup>2</sup>Department of Civil and Environmental Engineering, Tufts University, Medford, MA, USA

<sup>3</sup>Joint Global Change Research Institute, Pacific Northwest National Laboratory, College Park, MA, USA

<sup>4</sup>Joint Global Change Research Institute, Pacific Northwest National Laboratory, College Park, MA, USA

<sup>5</sup>Joint Global Change Research Institute, Pacific Northwest National Laboratory, College Park, MA, USA

<sup>6</sup>Lawrence Berkeley National Laboratory, University of California, Berkeley, Berkeley, CA, USA

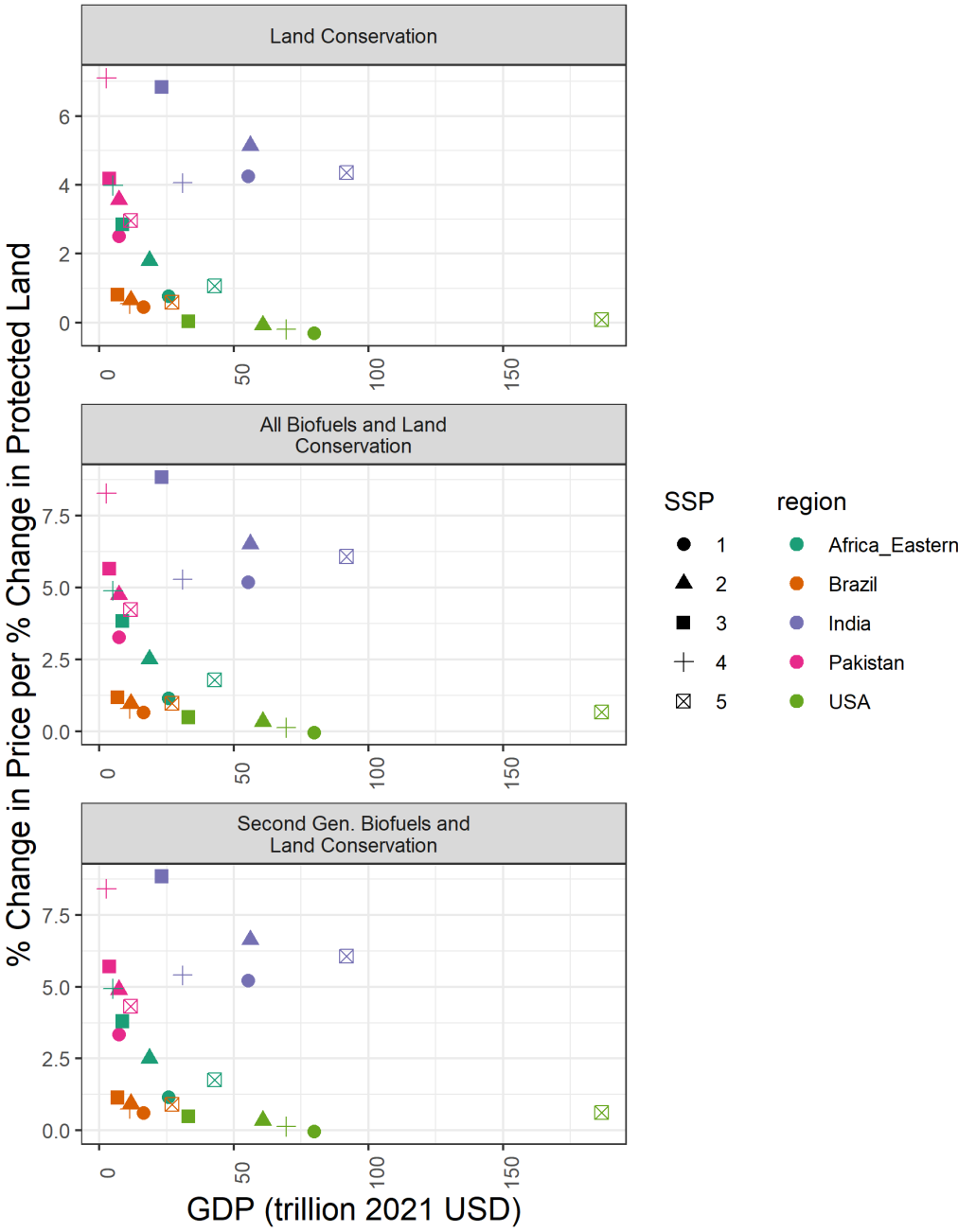
<sup>7</sup>Joint Global Change Research Institute, Pacific Northwest National Laboratory, College Park, MA, USA

## Contents of this file

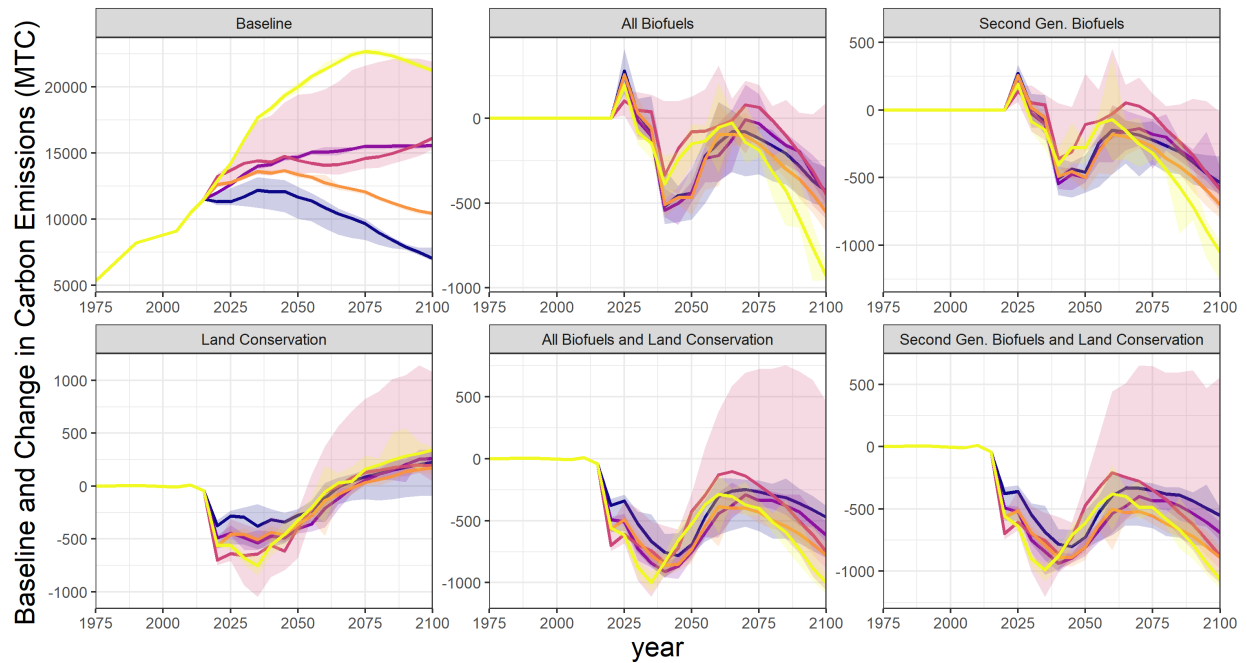
1. Figures S1 and S2

---

Corresponding author: F. C. Dolan, Department of Civil and Environmental Engineering,  
Tufts University, Medford, MA, 02155, USA. (flannery.dolan@tufts.edu)



**Figure S1.** The percent change in price of food crops normalized by percent protected land plotted against regional GDP in 2100. Regions are depicted by colors and SSPs are depicted by shapes.



**Figure S2.** Change in total carbon emissions (from land use change and fossil fuel and industrial sources) through time in metric tonnes of Carbon. The top left panel shows global carbon emissions at the baseline (i.e., with no constraint imposed). Colors indicate the SSP scenario. The solid lines depict the median within the SSP group while the transparent ribbons show the range over all scenarios within the SSP group.