

Physical and ecophysiological controls on the relationship between solar-induced chlorophyll fluorescence and gross primary productivity across diurnal and seasonal scales in the boreal forest

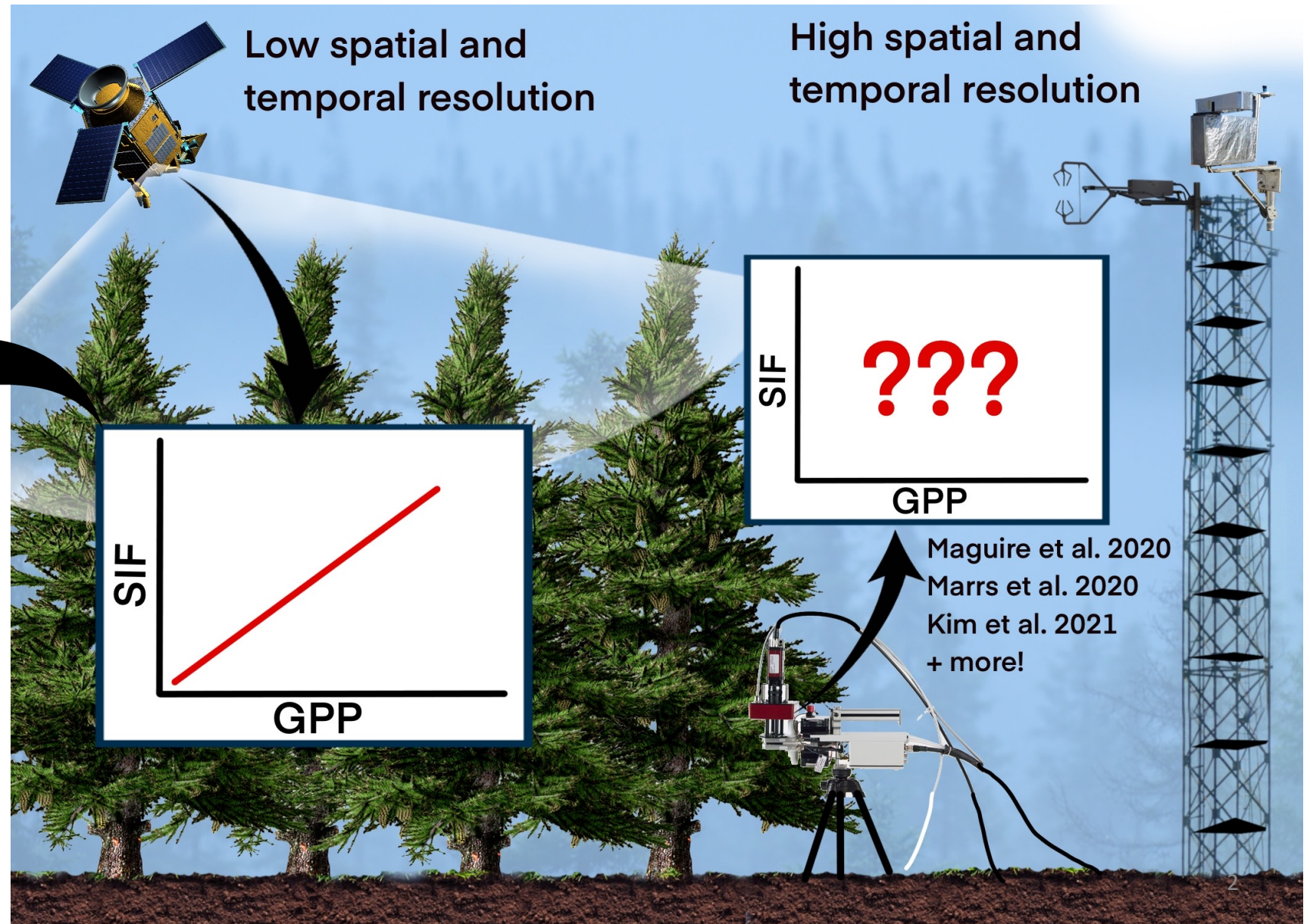
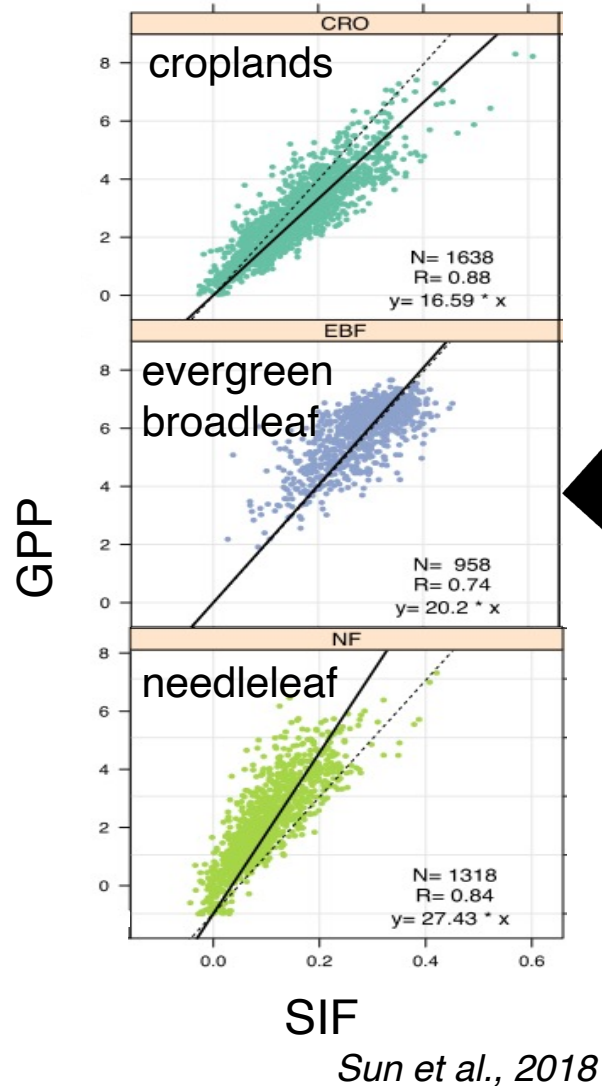


Zoe Pierrat, Troy Magney, David Bowling, Ulli Seibt, Katja Grossmann, Andrew Maguire, Alex Norton, Jacob Bortnik, Bruce Johnson, Warren Helgason, Alan Barr, Christian Frankenberg, Nicholas Parazoo, Jochen Stutz

Dec 2021



SIF is a powerful proxy for GPP, however, smaller scale studies have highlighted nuance to the relationship between SIF and GPP



A SIF emission is one of three potential pathways an absorbed photon can take. We can use this information to relate SIF and GPP

$$GPP = APAR * LUE_P$$
$$SIF = APAR * LUE_F * f_{esc}$$

$$GPP = SIF * \frac{LUE_P}{LUE_F * f_{esc}}$$

Solar-Induced
Chlorophyll Fluorescence
(SIF) ~0-3%

LUE_F

Photosynthesis
~5-90%
(GPP)

LUE_P

APAR

Heat Dissipation
~5-90%

Approximated
with PRI and CCI

Approximated
with NIRv and
APAR

f_{esc}

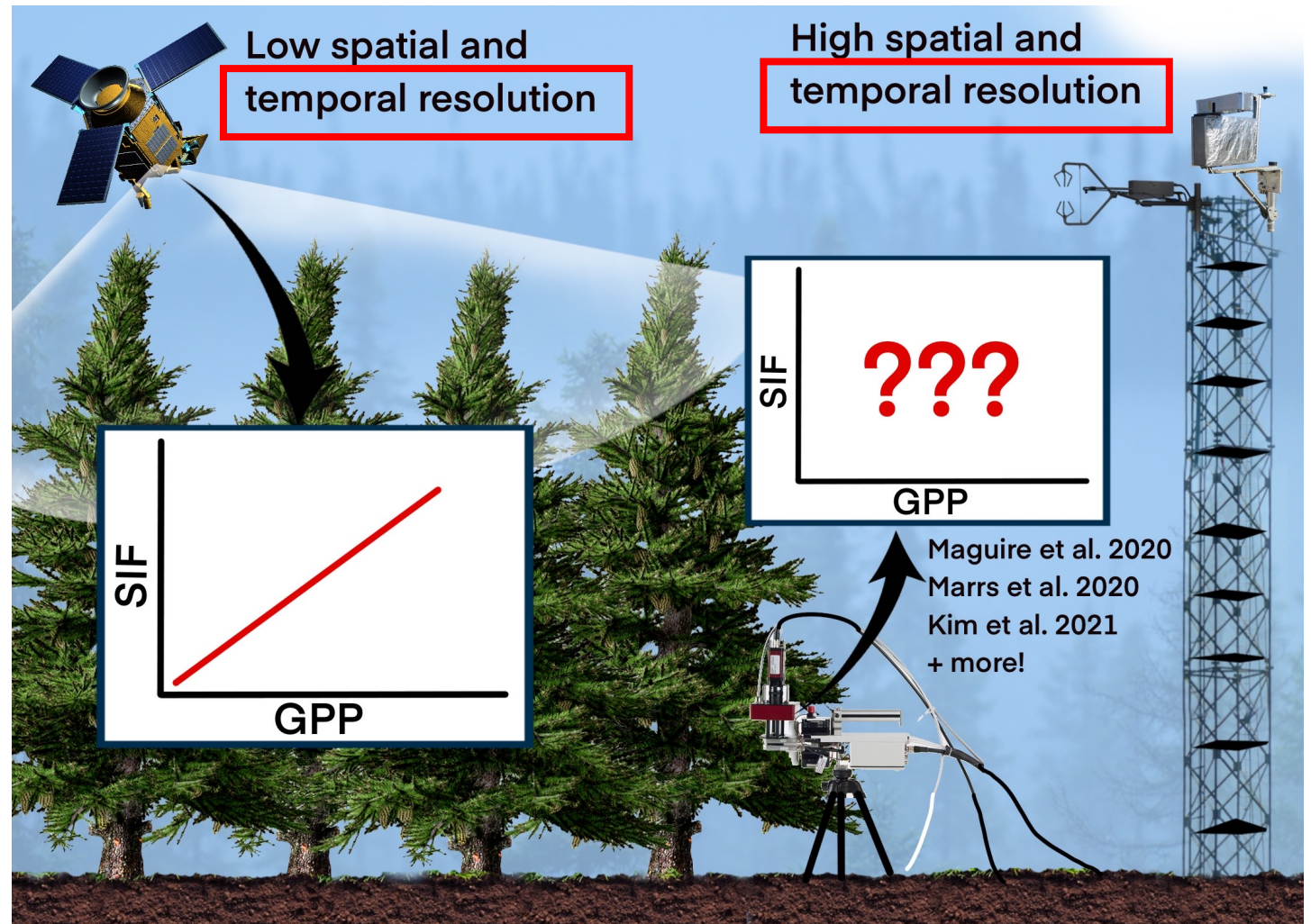
Photon plant interactions over complex canopy structures (*physical*) create significant challenges for interpreting SIF and connecting it to plant productivity (*ecophysiological*)

The goals of this study:

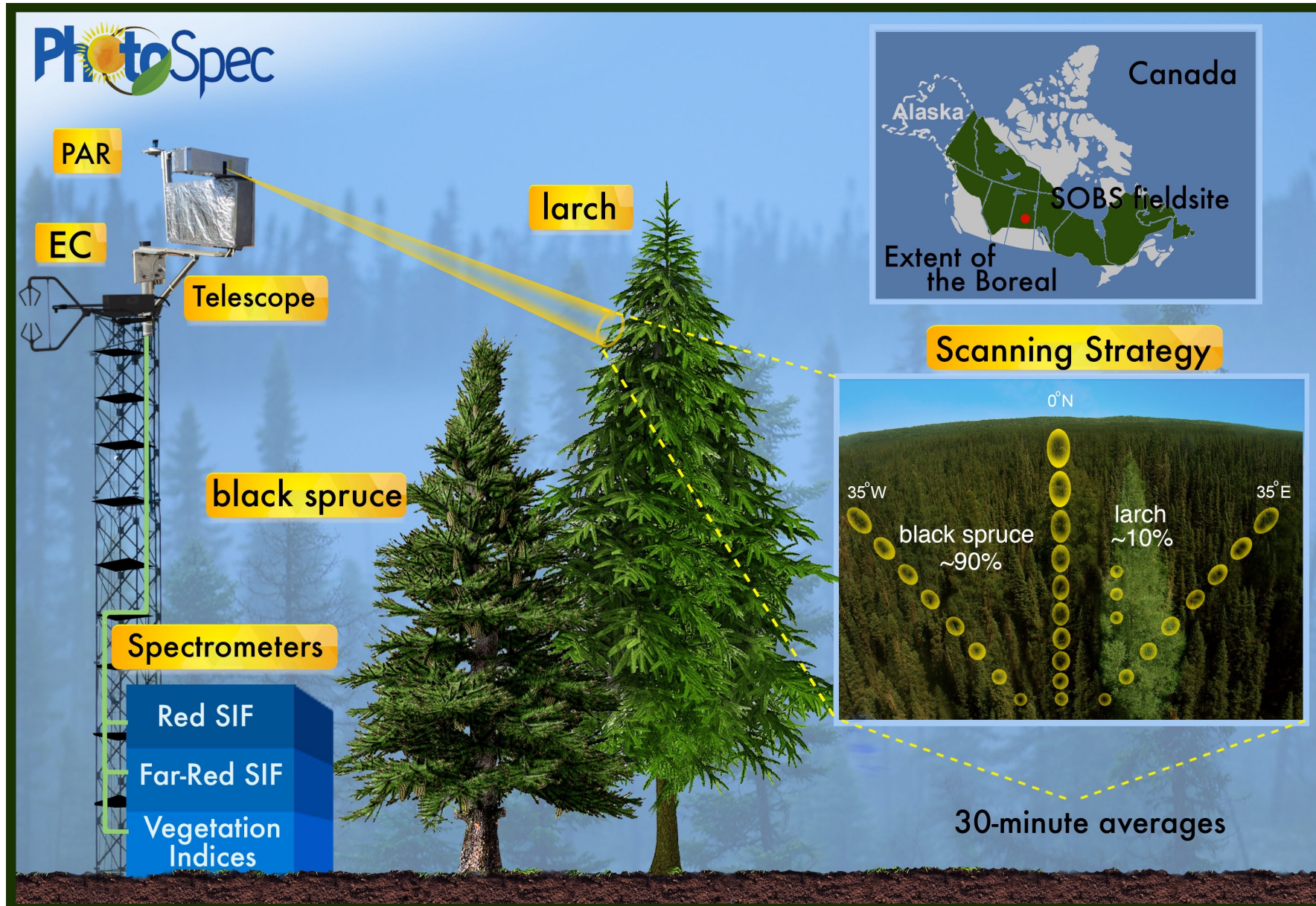
$$GPP = SIF * \frac{LUE_P}{LUE_F * f_{esc}}$$

1. What are the relationships among SIF, VIs, and GPP?
2. How do the dynamics of LUE_P , LUE_F , and f_{esc} impact the relationship between SIF and GPP at varying temporal scales?

*in the boreal forest



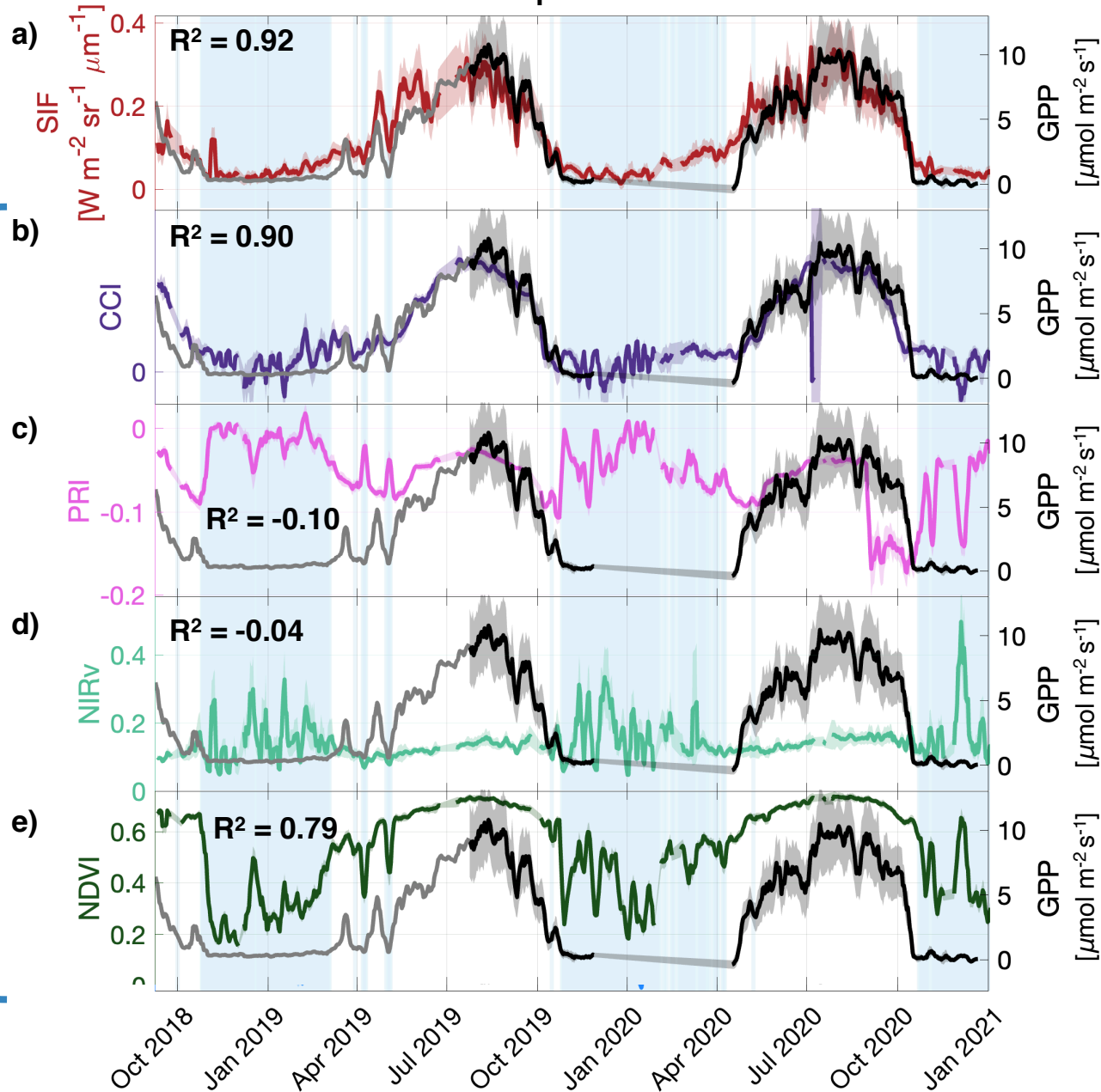
We collected data from PhotoSpec in a boreal mixed-species needleleaf forest



Pierrat et al., 2021
Pierrat et al., in revision
Grossmann et al., 2018

SIF and vegetation indices as a proxy for GPP

Southern Old Black Spruce 2018-2021 Timeseries

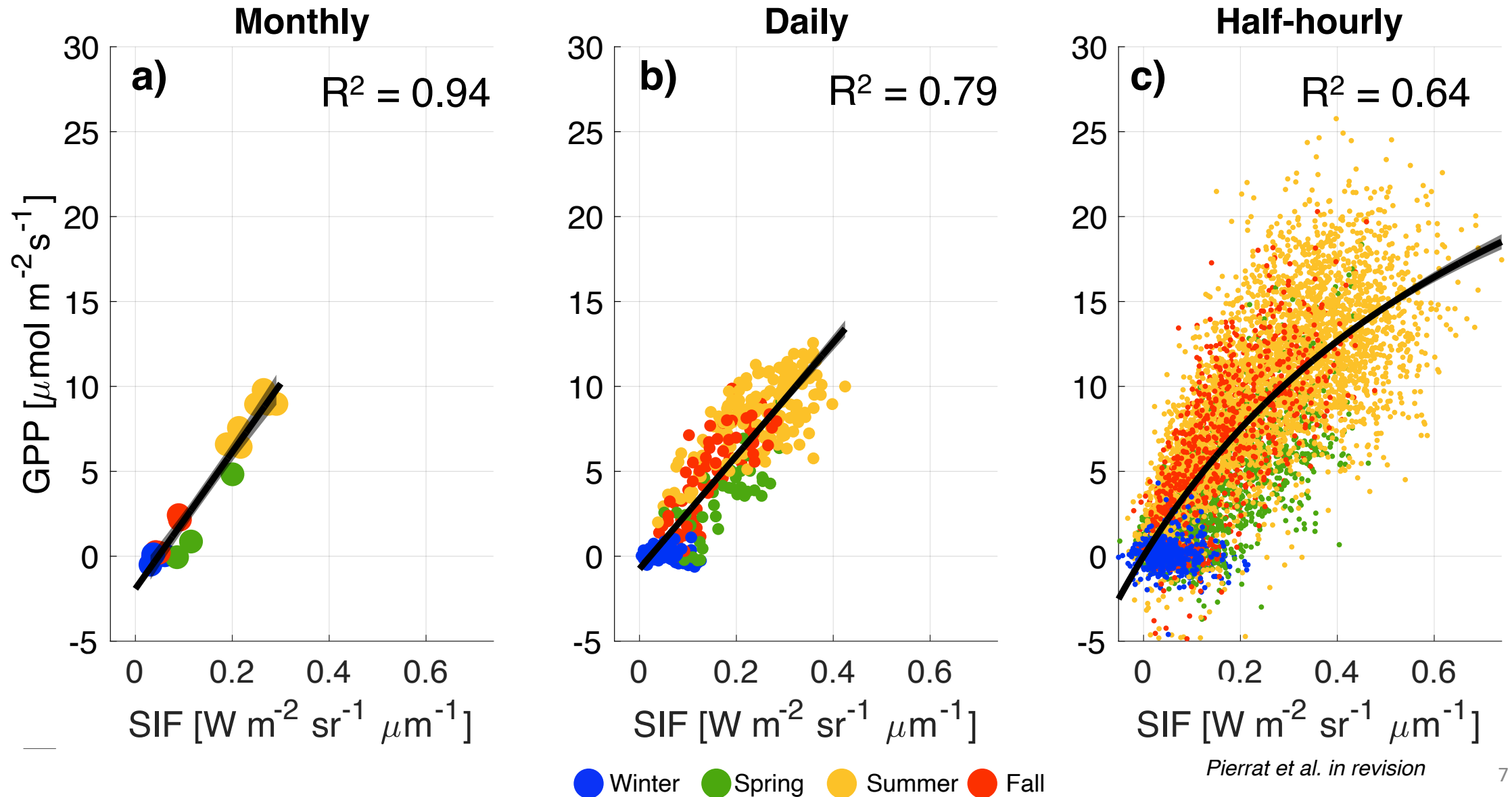


Snow impacts
all VIs

Physiologically sensitive
metrics (SIF, CCI, PRI*)
show seasonal
correlations with GPP

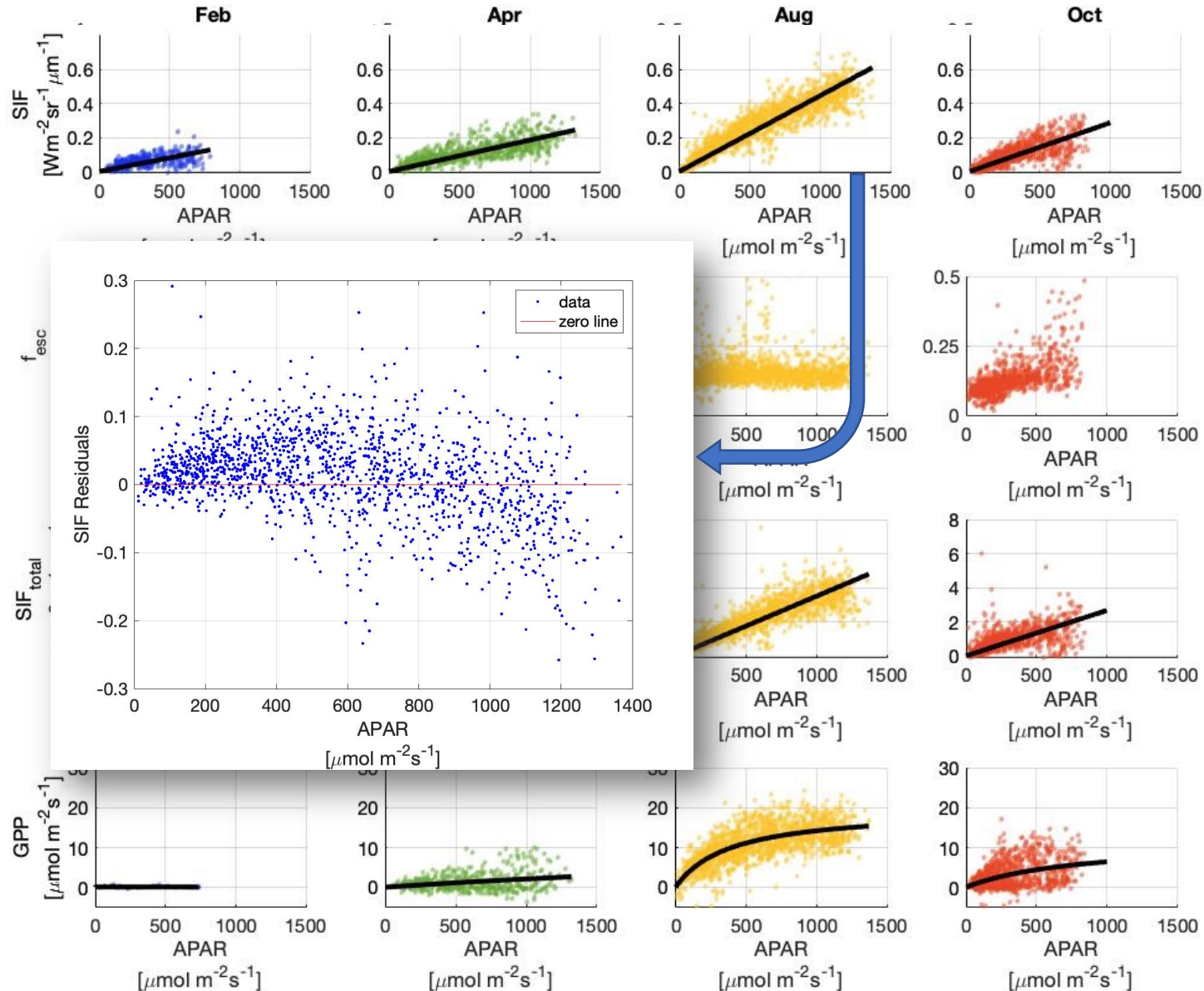
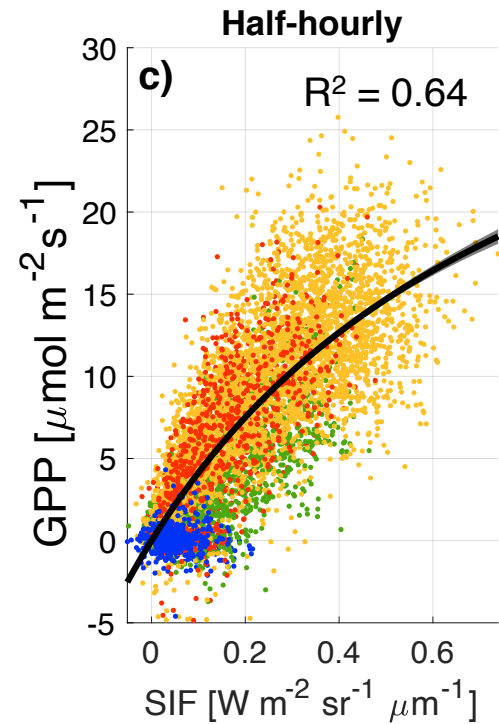
Structurally sensitive indices
(NDVI and NIRv) show little
seasonal variation

The SIF-GPP relationship becomes **increasingly non-linear** at high temporal resolutions



Light saturation of GPP is the primary driver of the non-linear SIF/GPP relationship at a half-hourly resolution

$$GPP = SIF * \frac{LUE_P}{LUE_F * f_{esc}}$$



$$SIF = APAR * LUE_F * f_{esc}$$

$$f_{esc} = \frac{NIRv}{fPAR}$$

Zeng et al., 2019

$$\frac{SIF}{f_{esc}} = SIF_{total} = APAR * LUE_F$$

$$GPP = APAR * LUE_P$$

$$LUE_P = \frac{GPP_{max} * APAR}{c + APAR}$$

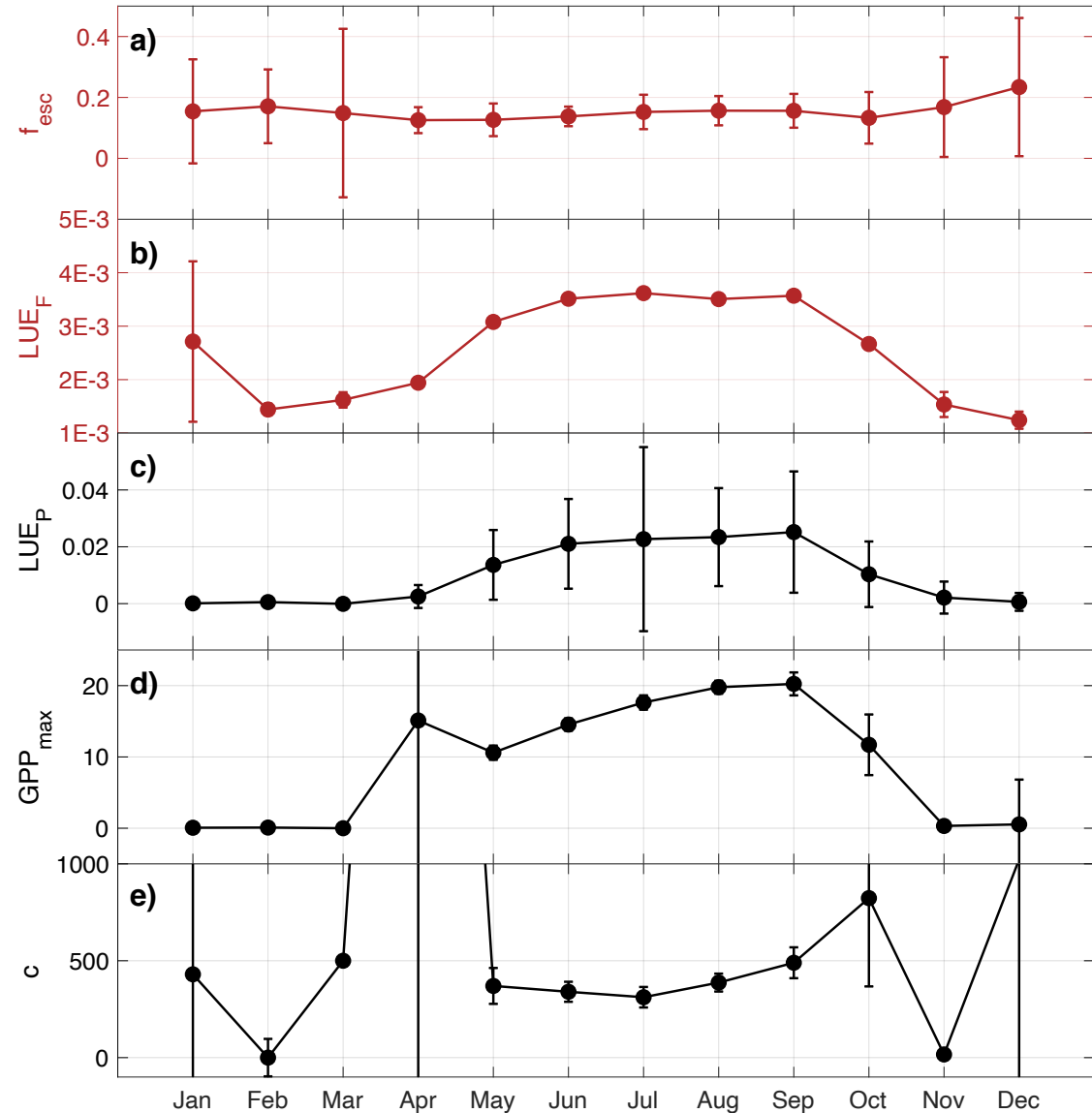
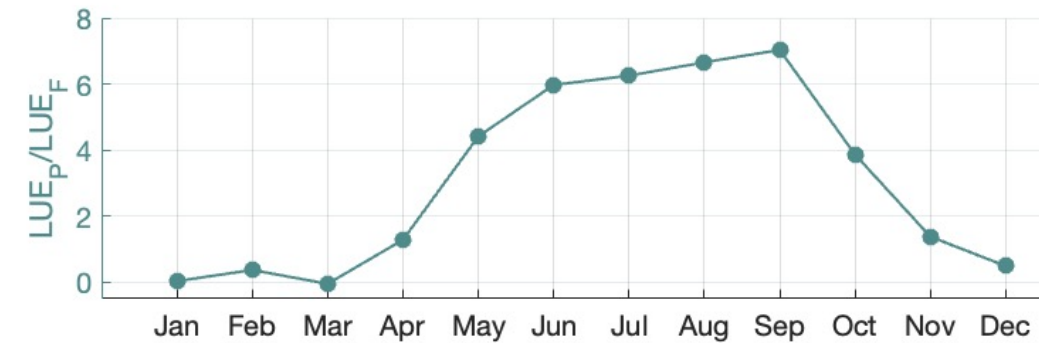
Co-variation between LUE_F and LUE_P drives the seasonal convergence of SIF and GPP, but there is a seasonal dependence

$$GPP = SIF * \frac{LUE_P}{LUE_F * f_{esc}}$$

$$SIF = APAR * LUE_F * f_{esc}$$

$$GPP = APAR * LUE_P$$

$$LUE_P = \frac{GPP_{max} * APAR}{c + APAR}$$



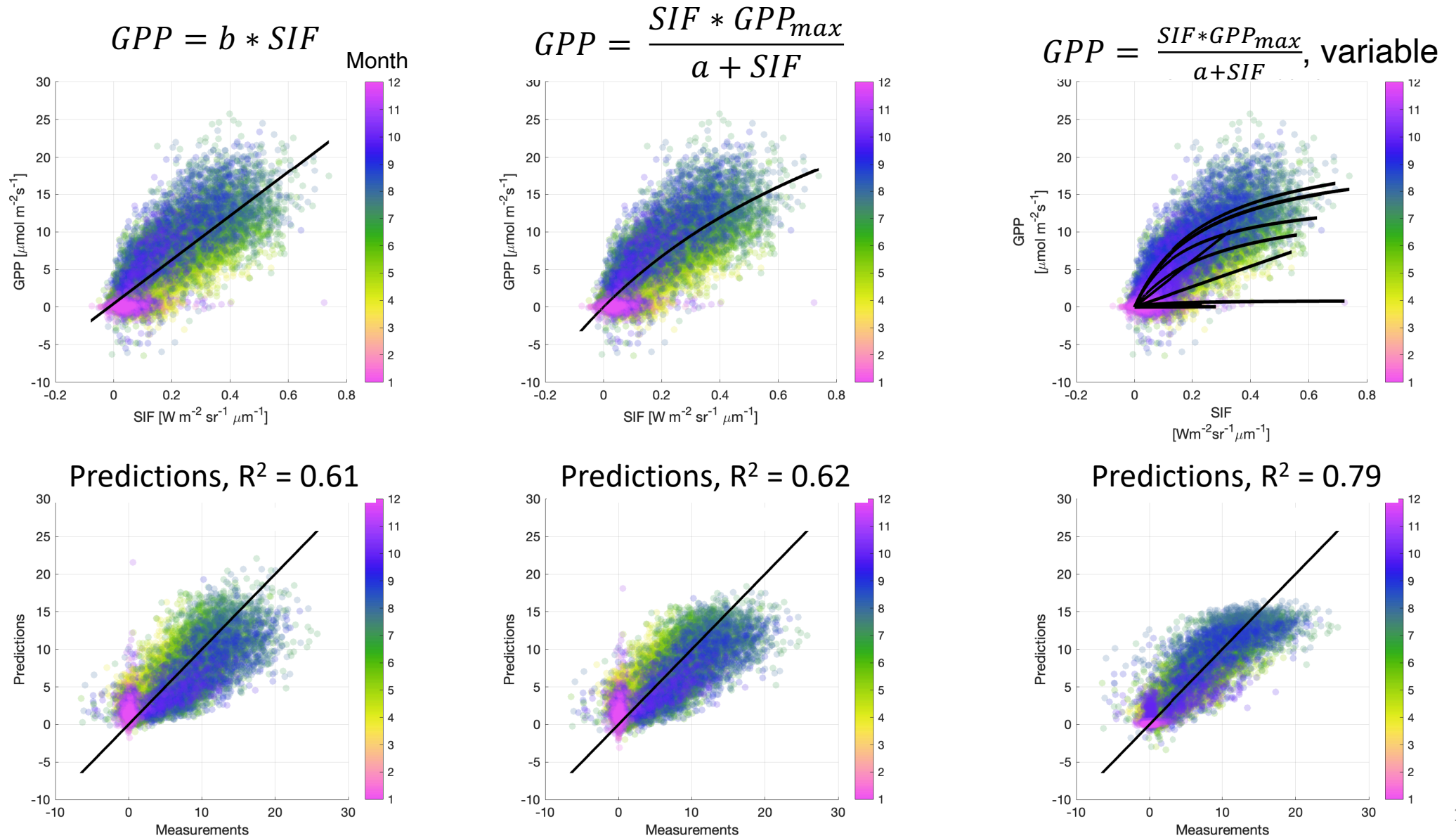
Calculated using NIRv following Zeng et al., 2019

Calculated from light response curves of SIF_{total}

Calculated as $GPP/APAR$

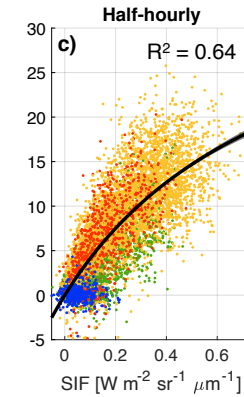
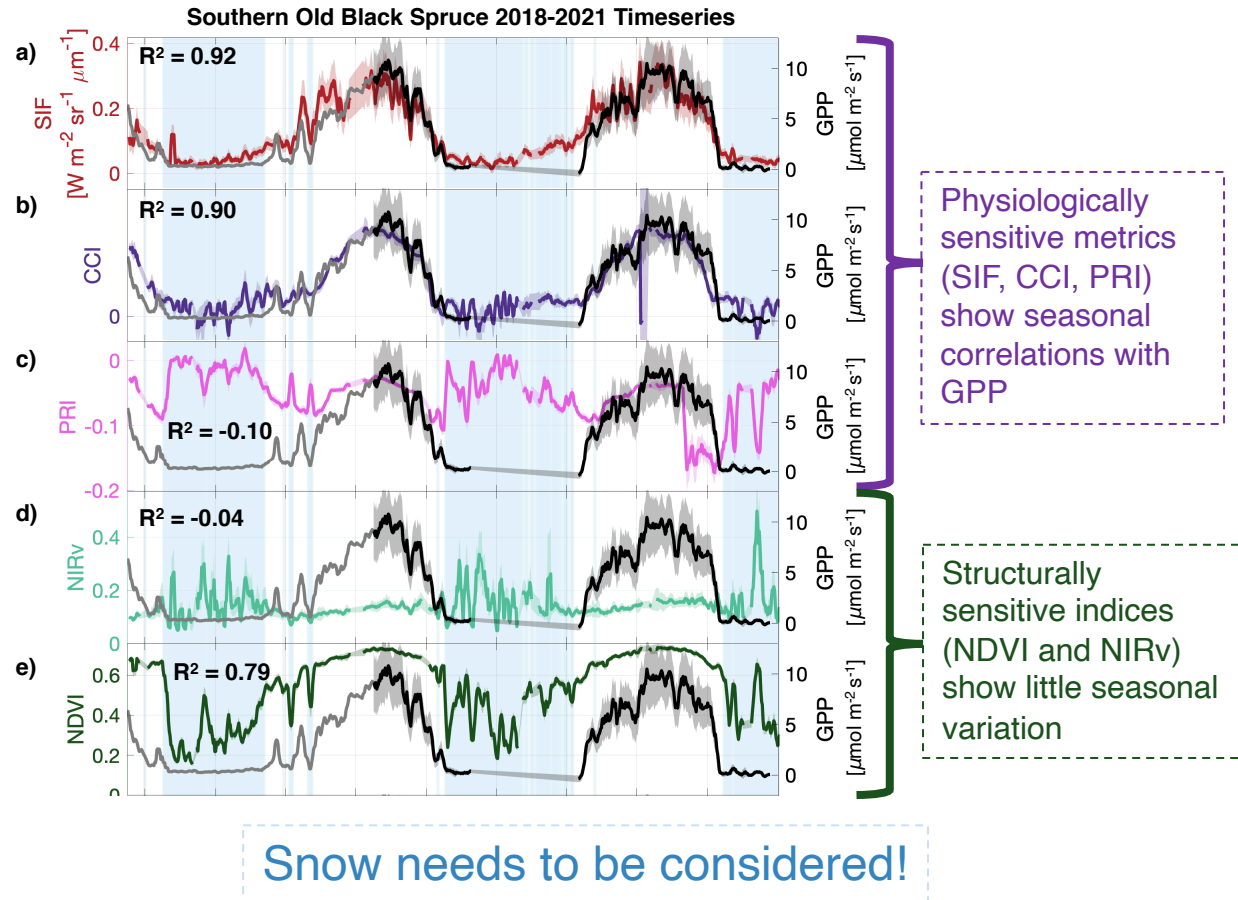
Calculated from light response curves of GPP

A seasonally variable SIF-GPP relationship can help account for nuances in the seasonal variability of f_{esc} , LUE_F , and LUE_P



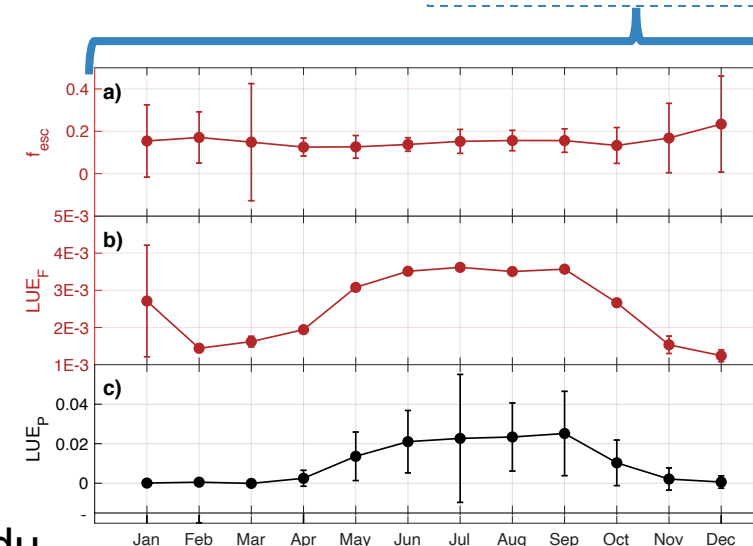
Conclusions:

1. What are the relationships among SIF, VIs, and GPP across varying temporal scales?
2. How do the dynamics of LUE_P , LUE_F , and f_{esc} impact the relationship between SIF and GPP at varying temporal scales?



Diurnal nonlinearity due to light saturation of GPP/ LUE_P

Co-variation between LUE_F and LUE_P drives seasonal convergence



A seasonally variable SIF-GPP relationship will help account for additional nuances to the SIF-GPP relationship

Questions?  zpierrat@g.ucla.edu  @zoeapie