

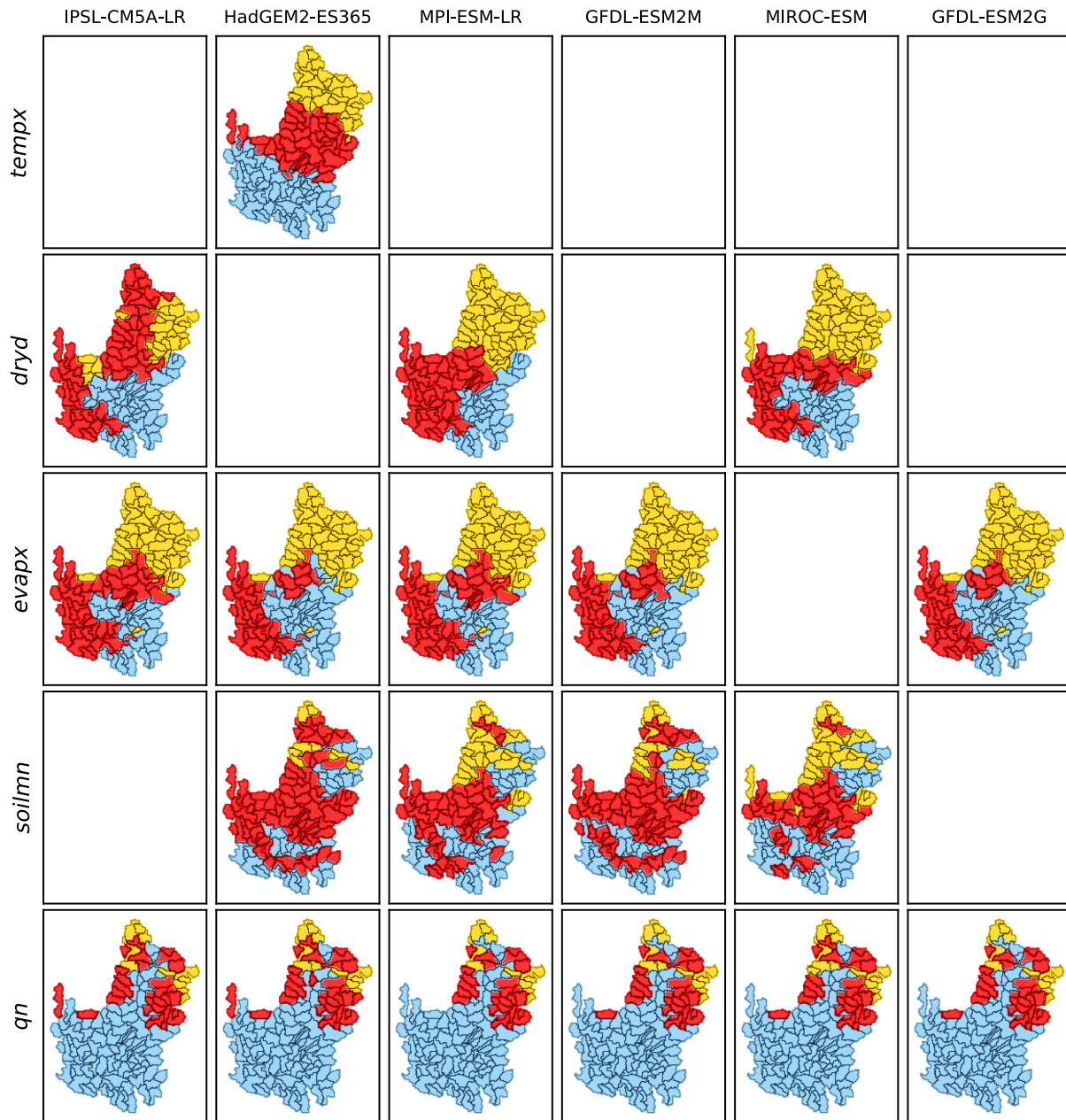
Supplementary Materials: Characterizing Drought Behavior using Unsupervised Machine Learning for Improved Understanding of Future Drought in the Colorado River Basin

Carl J. Talsma¹, Katrina E. Bennett¹, Velimir V. Vesselinov¹

¹ Earth and Environmental Sciences, Los Alamos National Laboratory, Los Alamos, NM, 87545.

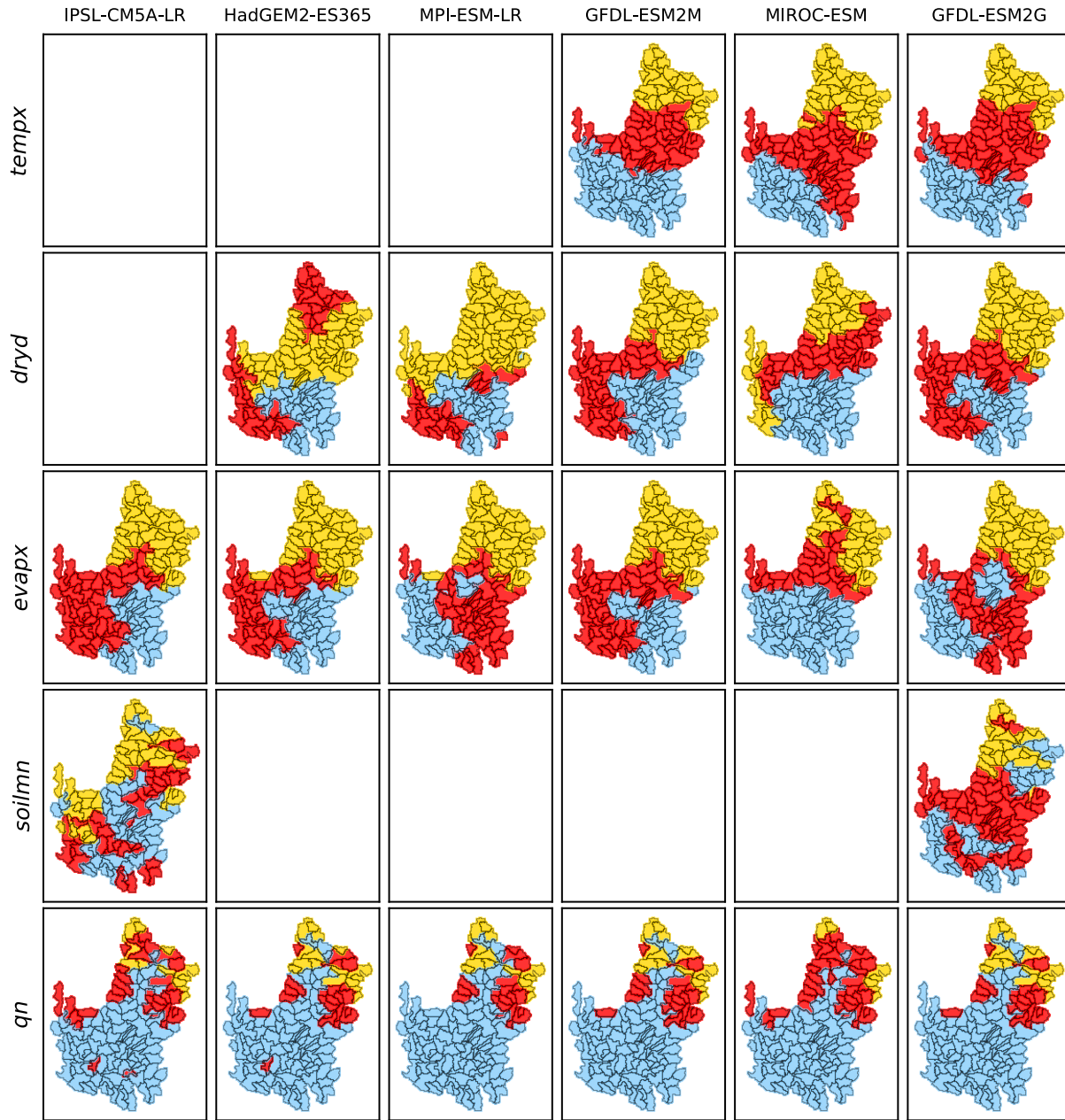
Corresponding authors: Carl J. Talsma(talsmac83@lanl.gov), Velimir V. Vesselinov(vvv@lanl.gov)

Historical 3 Signals

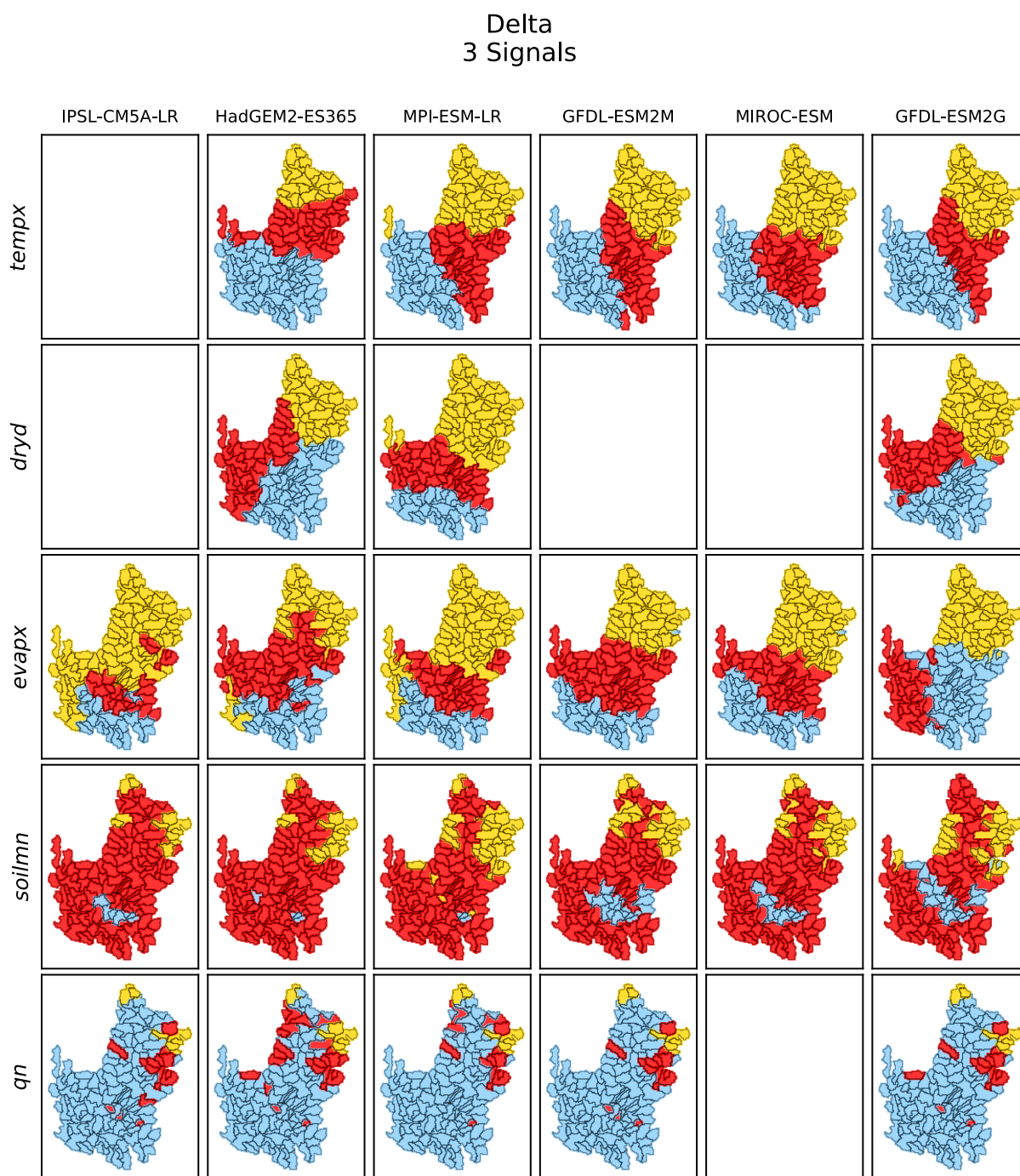


S1: Spatial results of historical NMFk clustering algorithm of each drought indicator for each of six ESMs at 3 signals and ordered from driest (left) to wettest (right) future projection.

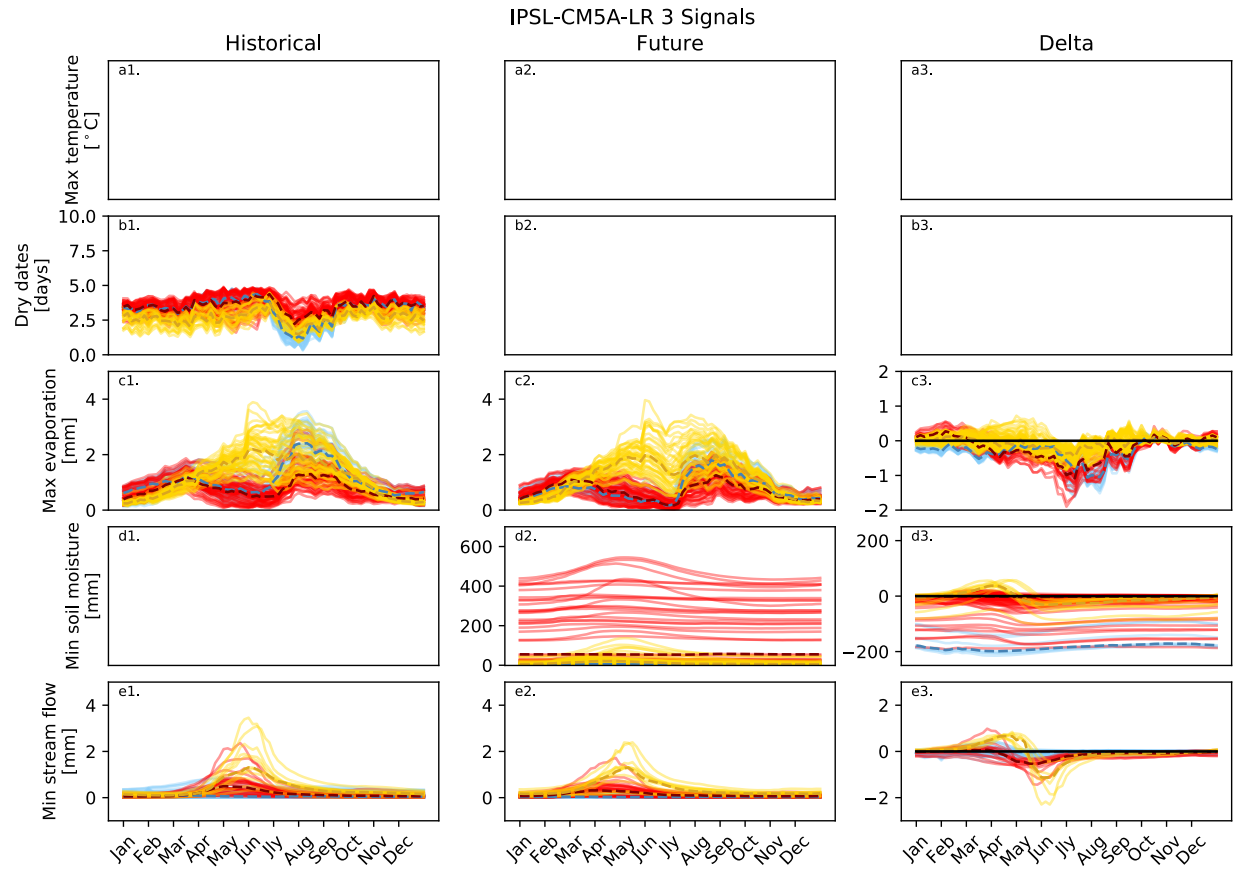
Future 3 Signals



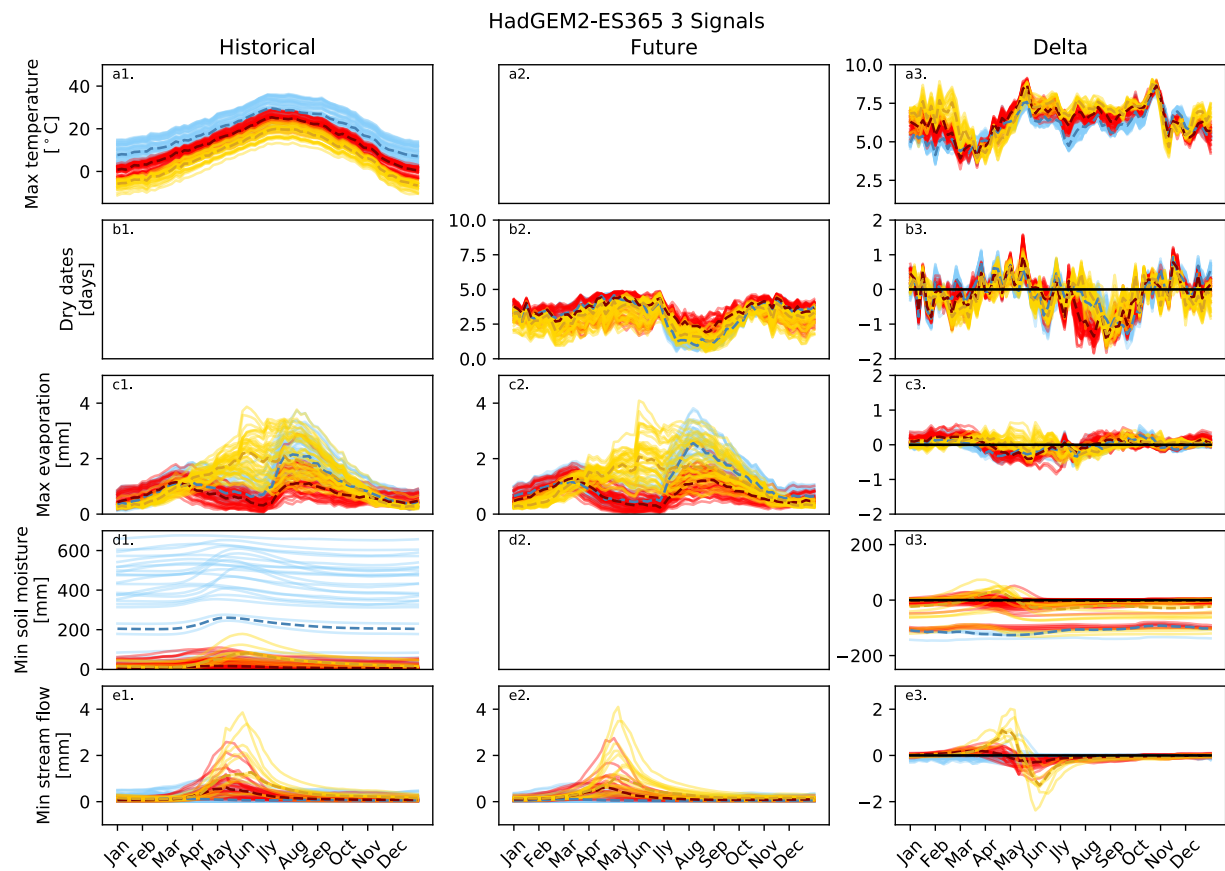
S2: Spatial results of future NMFk clustering algorithm of each drought indicator for each of six ESMs at 3 signals and ordered from driest (left) to wettest (right) future projection.



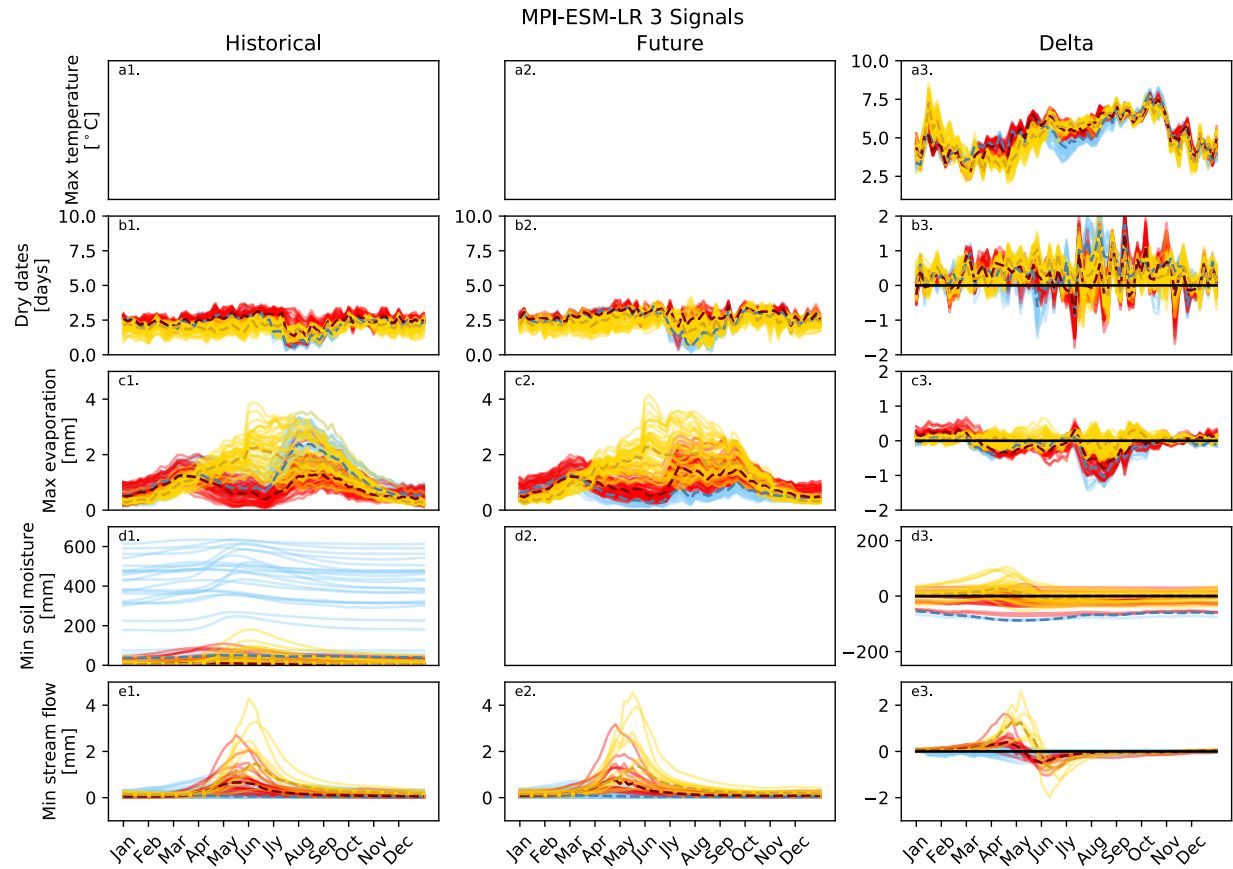
S3: Spatial results of the ‘delta’ NMFk clustering algorithm of each drought indicator for each of six ESMs at 3 signals and ordered from driest (left) to wettest (right) future projection.



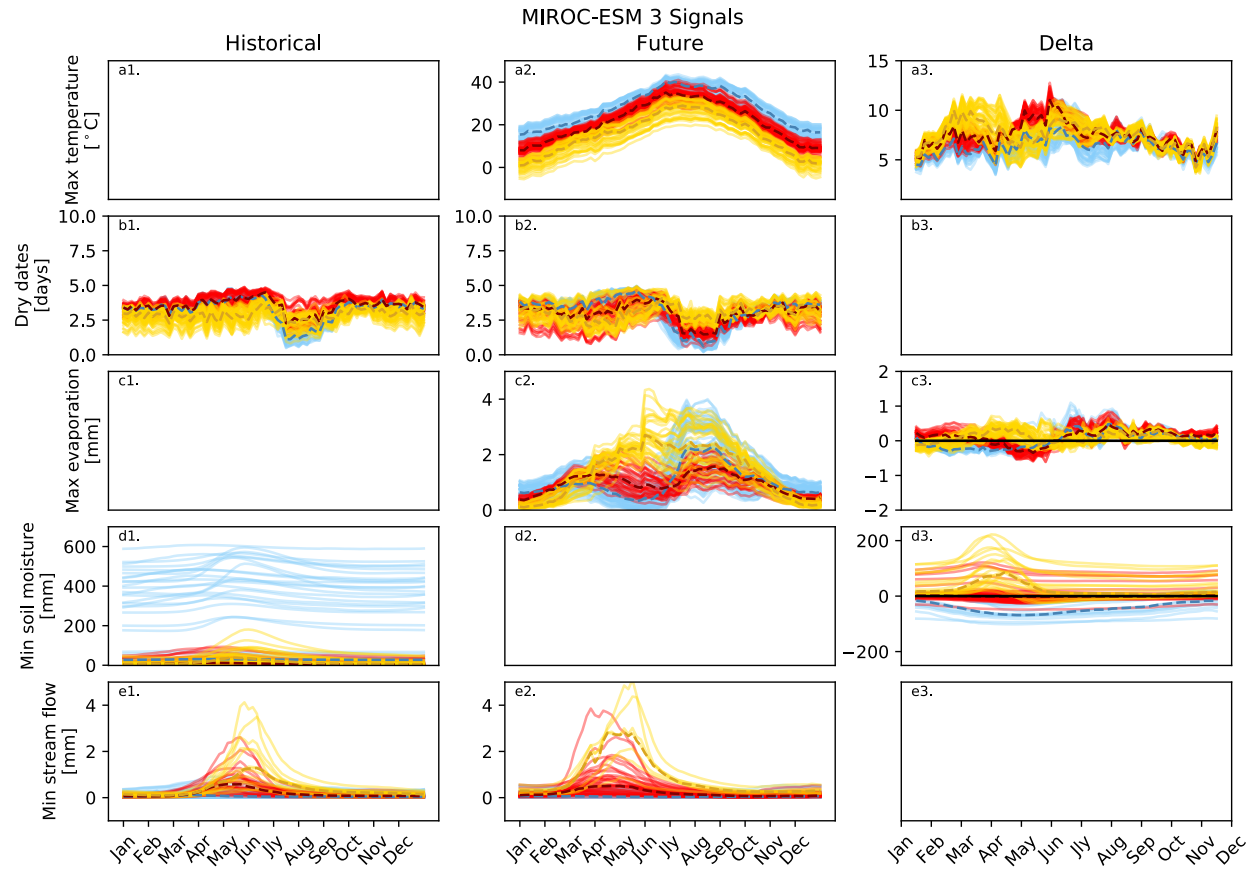
S4: Temporal results of the NMFk clustering at 3 signals for the IPSL-CM5A-LR model for each time period and the ‘delta’ between historical and future.



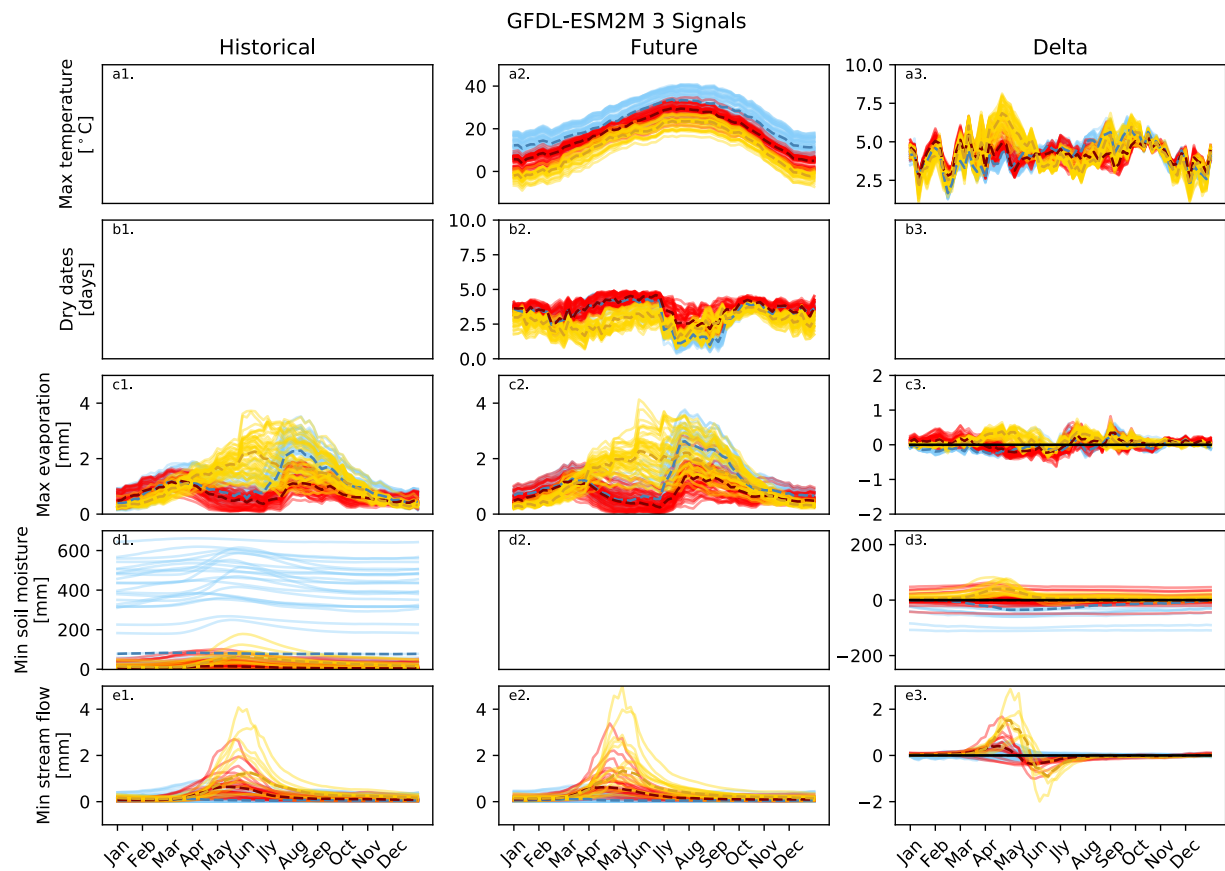
S5: Temporal results of the NMFk clustering at 3 signals for the HadGEM2-ES365 model for each time period and the ‘delta’ between historical and future.



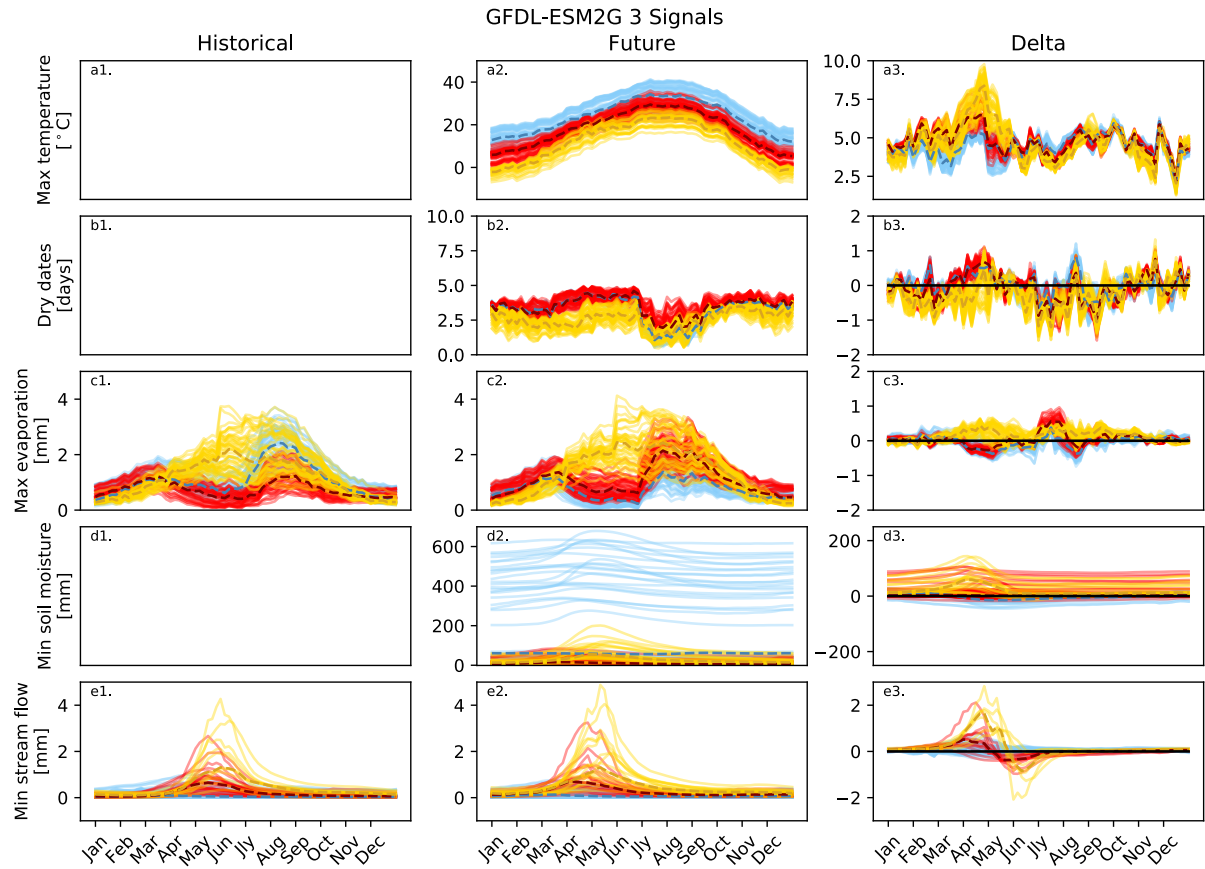
S6: Temporal results of the NMFk clustering at 3 signals for the MPI-ESM-LR model for each time period and the 'delta' between historical and future.



S7: Temporal results of the NMFk clustering at 3 signals for the MIROC-ESM model for each time period and the 'delta' between historical and future.



S8: Temporal results of the NMFk clustering at 3 signals for the GFDL-ESM2M model for each time period and the 'delta' between historical and future.



S9: Temporal results of the NMFk clustering at 3 signals for the GFDL-EMS2G model for each time period and the 'delta' between historical and future.