

**GC\_SRF: A new generalized strategy for obtaining the lithospheric thickness from S-wave receiver functions and its application to southeastern Tibet**Zhou Zhang<sup>1,2,3</sup>, Yangfan Deng<sup>1,2\*</sup>

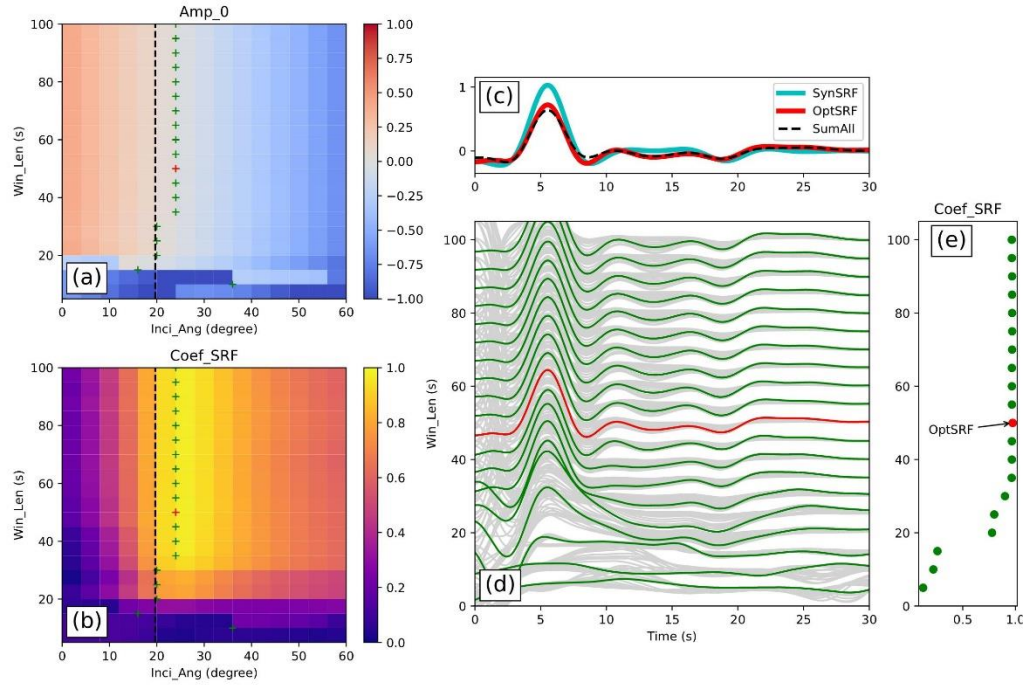
1State Key Laboratory of Isotope Geochemistry, Guangzhou Institute of Geochemistry, Chinese Academy of Sciences, Guangzhou, China.

2CAS Center for Excellence in Deep Earth Science, Guangzhou, 510640, China.

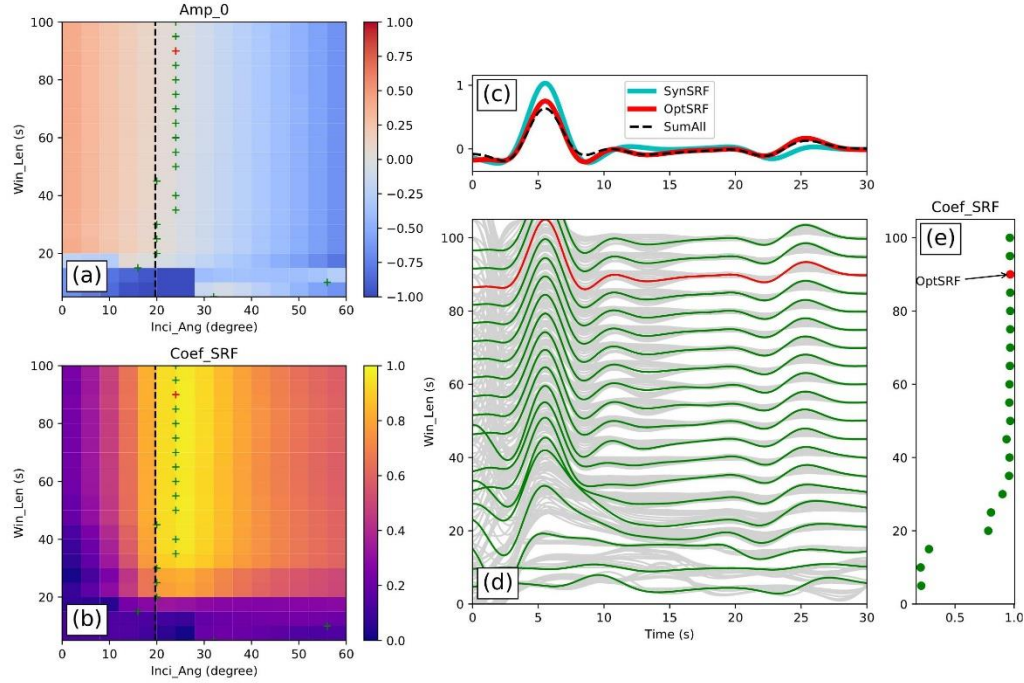
3College of Earth and Planetary Sciences, University of Chinese Academy of Sciences, Beijing, China.

**Contents of this file**

Figures S1 to S2



**Figure S1** Similar to Figure 6 but for model SM02 ( $t_S - t_{SLP} = 19.06s$ ).



**Figure S2** Similar to Figure 6 but for model SM03 ( $t_S - t_{SLP} = 22.79s$ ).