

# A Data-driven Model of the Solar Wind, Interstellar Pickup Ions, and Turbulence throughout Interplanetary Space

SH23C-2671

Tae K. Kim<sup>1</sup>, Igor A. Kryukov<sup>1,2</sup>, Nikolai V. Pogorelov<sup>1,3</sup>, Heather A. Elliott<sup>4</sup>, Gary P. Zank<sup>1,3</sup>

<sup>1</sup>Center for Space Plasma and Aeronomic Research, University of Alabama in Huntsville, Huntsville, AL, USA, <sup>2</sup>Institute for Problems in Mechanics, RAS, Moscow, Russia

<sup>3</sup>Department of Space Science, University of Alabama in Huntsville, Huntsville, AL, USA, <sup>4</sup>Southwest Research Institute, San Antonio, TX, USA



## 1. Introduction

### Solar Wind

- A stream of charged particles originating from the Sun
- A medium in which the solar magnetic field and energy propagate outward
- Primary driver of space weather

### Heliosphere

- A “bubble-like” structure formed by the pressure balance between the solar wind and the local interstellar medium (LISM) as illustrated in Figure 1
- Size and shape largely affected by fluctuations in the solar wind parameters
- Heliopause: the boundary between the solar wind and the LISM plasma
- Heliosheath: the region characterized by compressed, turbulent, subsonic plasma flow
- Termination shock: the boundary across which the supersonic solar wind slows down to subsonic speeds

### Termination Shock Crossing by NASA Spacecraft

- Voyager 1*: 94 AU, December 2004 (Stone et al., 2005)
- Voyager 2*: 83.6 AU, August 2007 (Stone et al., 2008; Richardson et al., 2008)

Note: *New Horizons (NH)* passed Pluto at ~33 AU on July 14, 2015 and will be next.

## The Heliosphere

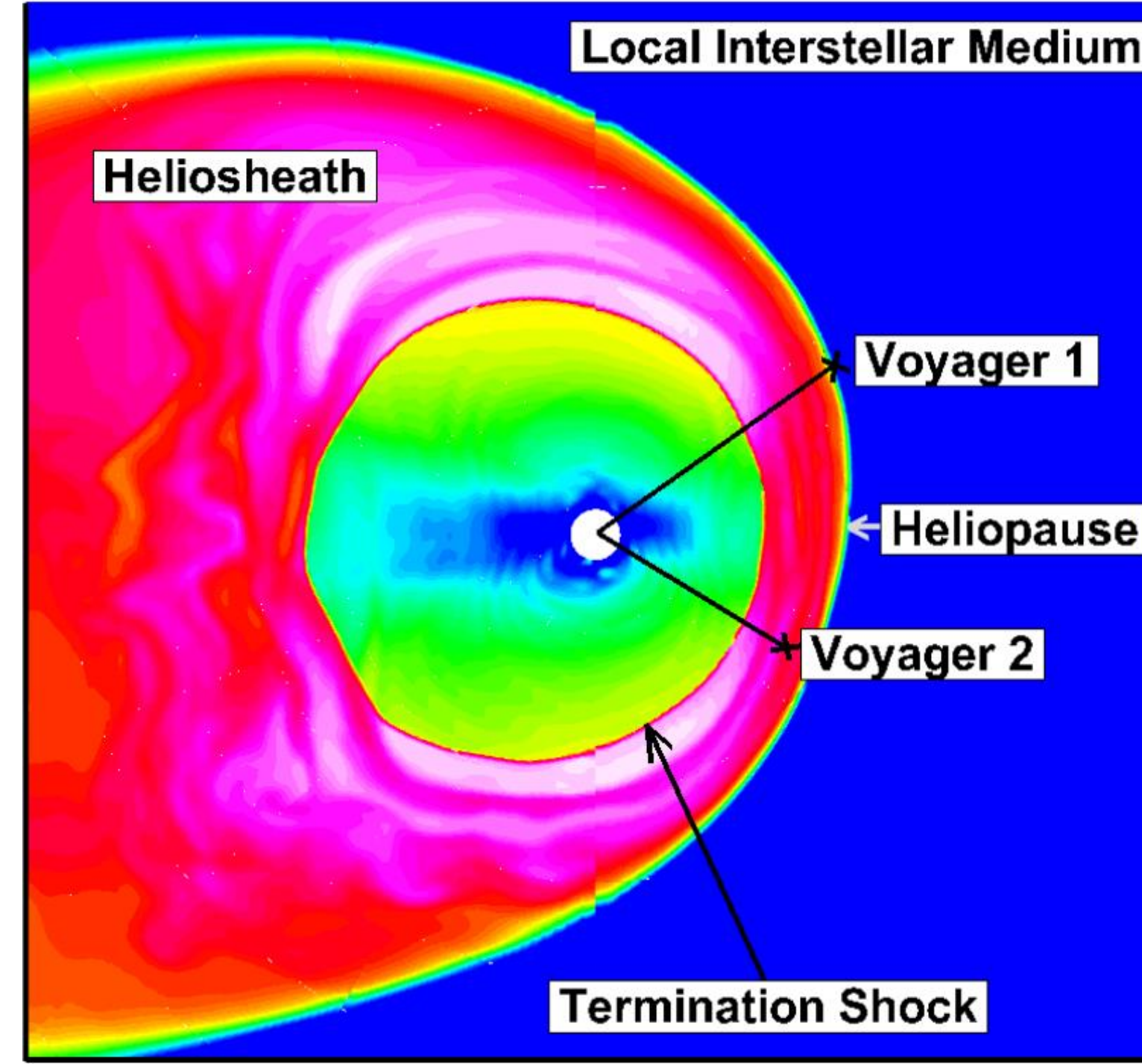


Figure 1. The heliosphere and the Voyager spacecraft trajectories

## 2. Modeling Software

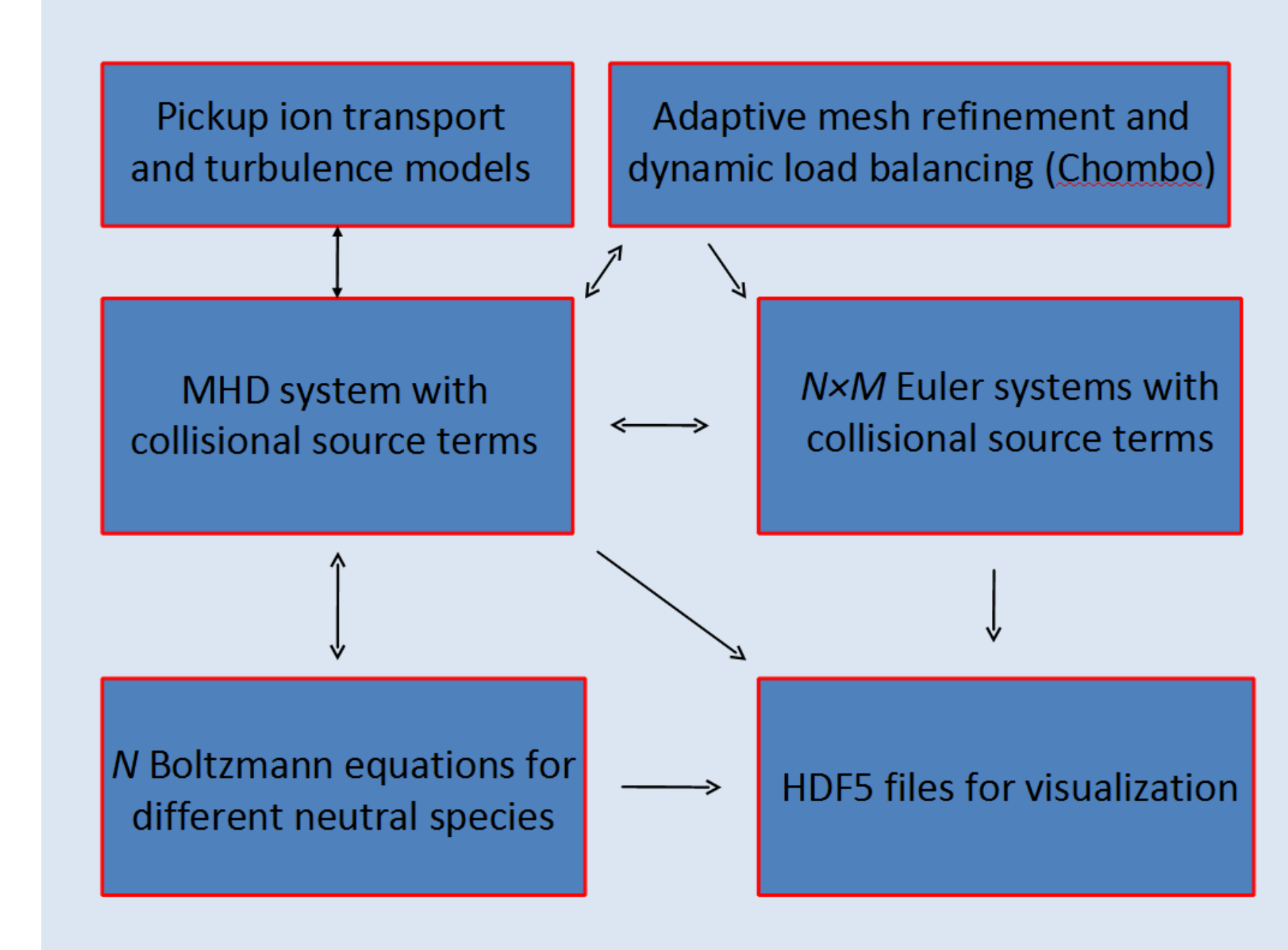


Figure 2. Block diagram of MS-FLUKSS (Pogorelov et al. 2011)

### Multi-Scale Fluid-Kinetic Simulation Suite (MS-FLUKSS)

- A package of numerical codes designed to model the heliosphere in multiple scales and high resolution
- Adaptive mesh refinement based on Chombo architecture (Colella et al. 2007)
- MHD treatment for solar wind / LISM plasma and fluid treatment for neutral hydrogen atoms (1, 2, 4, or 5 fluids) (Pogorelov et al. 2008)
- MHD treatment for solar wind / LISM plasma and kinetic treatment for neutral hydrogen atoms (Pogorelov et al. 2008; Borovikov et al. 2008; Heerikhuisen et al. 2008)
- Turbulence model for supersonic solar wind (Pogorelov et al. 2012; Kryukov et al. 2012)
- Time-dependent boundary conditions from in situ measurements of the solar wind (e.g., Pogorelov et al. 2013; Kryukov et al. 2012; Kim et al. 2016, 2017)
- Realistic 3-D time-dependent boundary conditions from remote-sensing observations of the solar wind (e.g., Kim et al. 2014a; 2014b)

## 3. 3-D Simulation Results

### 3-Fluid Model (MHD plasma, fluid LISM neutral H and PUI)

- Single-fluid plasma of solar and interstellar origins
- Fluid LISM neutral hydrogen atoms
- Fluid interstellar PUI and PUI-driven turbulence in the supersonic solar wind (e.g., Breech et al. 2008; Kryukov et al. 2012)
- 3-D time-dependent simulation between 1 and 80 AU

### Simulation Grid

- Spherical grid: 980 x 128 x 128 (r,  $\phi$ ,  $\theta$ )
- Non-uniform radial grid:  $\Delta r \approx 0.05, 0.08$ , and 0.13 AU at 1, 33, and 80 AU, respectively
- $\Delta \theta \approx 1.4^\circ$ ,  $\Delta \phi \approx 2.8^\circ$

### Boundary Conditions at 1 AU

- Based on the work by Kim et al. (2016) who used daily averaged OMNI data for a time-dependent two-fluid simulation
- Assumption of corotating solar wind using daily averaged solar wind parameters in the OMNI-driven equatorial region whose latitudinal extent varies with time (see Figure 3)
- Polar coronal holes (PCHs) centered at the poles and varying in size with time are designed to best match Ulysses data at high latitudes (see Figure 3)
- Interplanetary magnetic field components computed from OMNI |B| data in the form of a Parker spiral
- 27-day averaged tilt of the heliospheric current sheet (HCS) from the Wilcox Solar Observatory to construct a time-varying tilted dipole magnetic field configuration
- Previous Applications
  - Modeling shock propagation at Voyager 1 in the very local interstellar medium (Kim et al. 2017)
  - Modeling support for remote observations of aurorae at Uranus and Neptune using the Hubble Space Telescope (e.g., Lamy et al. 2017)

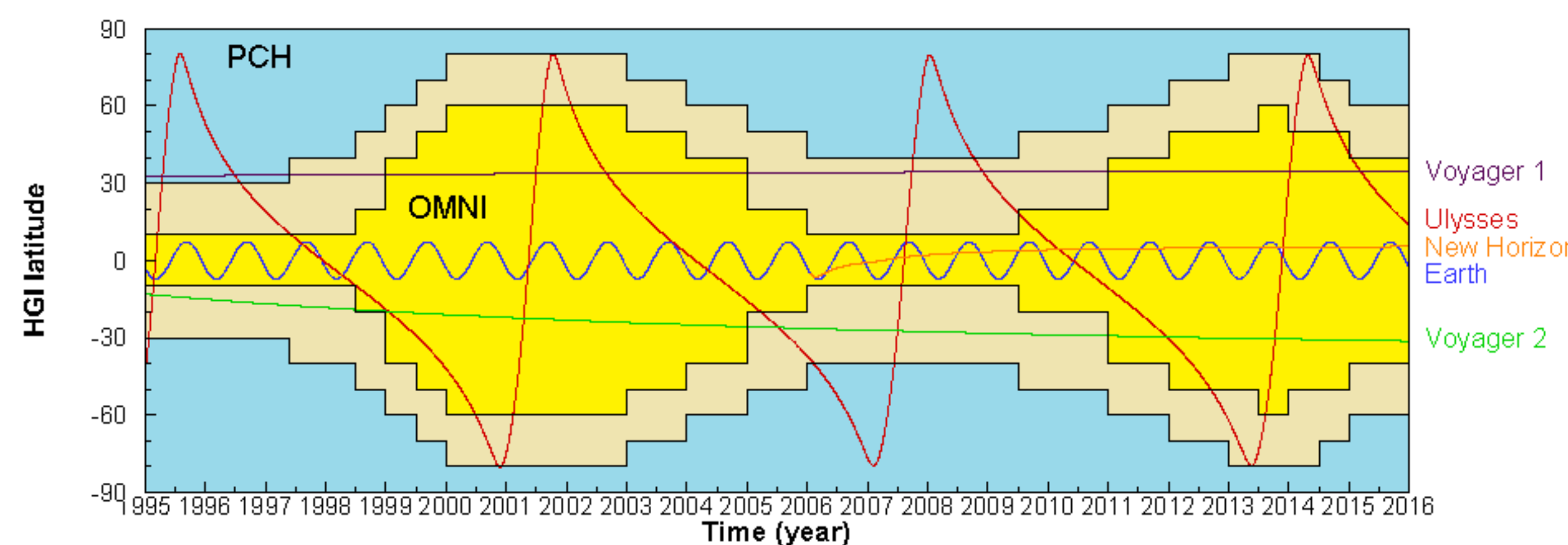


Figure 3. Latitudinal extents of OMNI data and PCH regions shown as a function of time

### LISM Parameters at 80 AU

- LISM H density:  $0.09 \text{ cm}^{-3}$  (Bzowski et al. 2009)
- LISM inflow speed and direction: 25.4 km/s,  $75.7^\circ$  and  $5.1^\circ$  ecliptic inflow longitude and latitude, respectively (McComas et al. 2015)
- LISM H temperature: 7500 K (McComas et al. 2015)

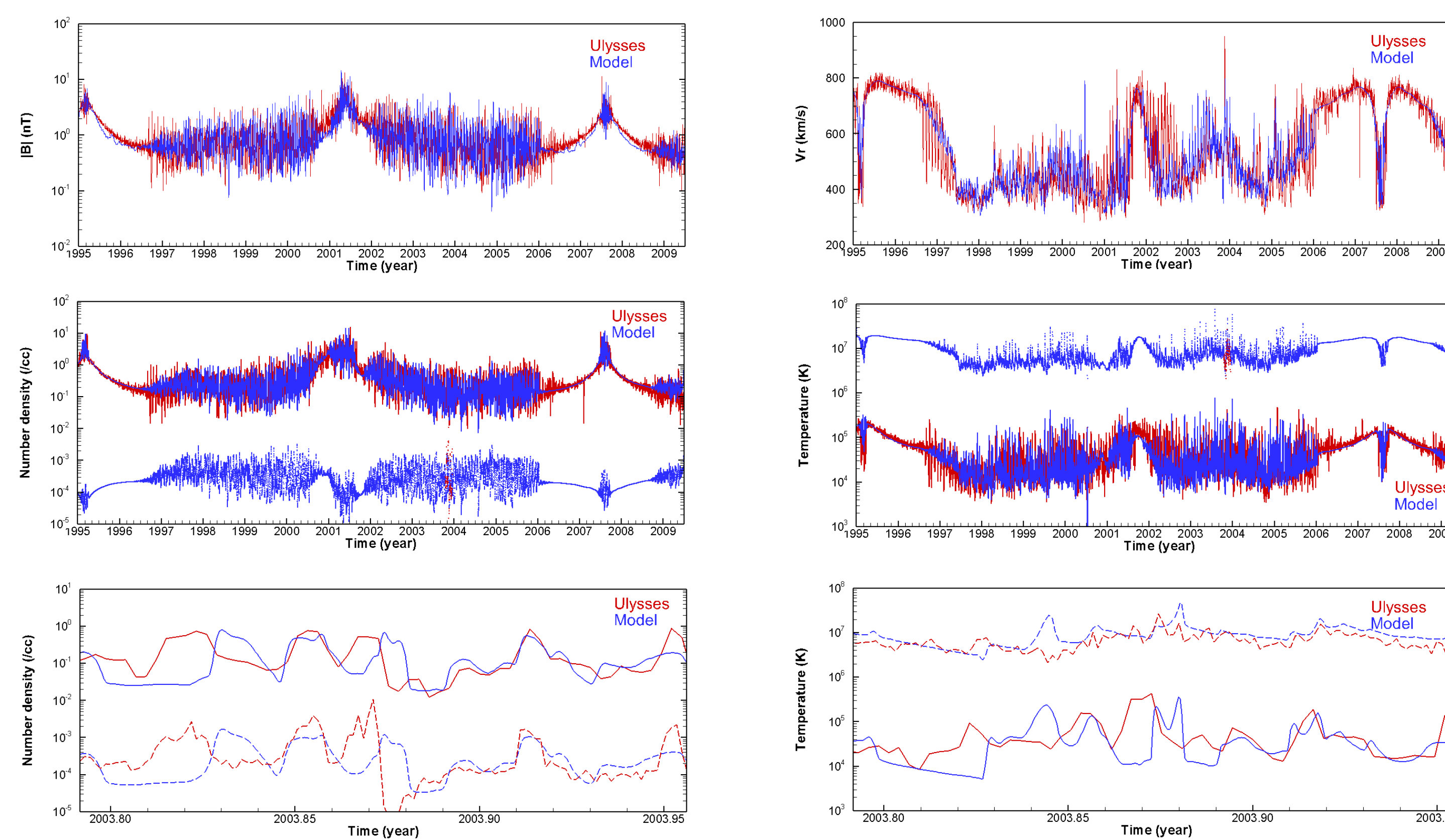


Figure 4. Model interplanetary magnetic field strength, radial velocity, solar wind and interplanetary pickup proton number density, and temperature compared with *Ulysses* data from 1995 to 2009.5 in the top two rows. The bottom two plots compare the model densities and temperatures with *Ulysses*/SWOOPS and *SWICS* data (e.g., Intriligator et al. 2012) around the 2003 Halloween event.

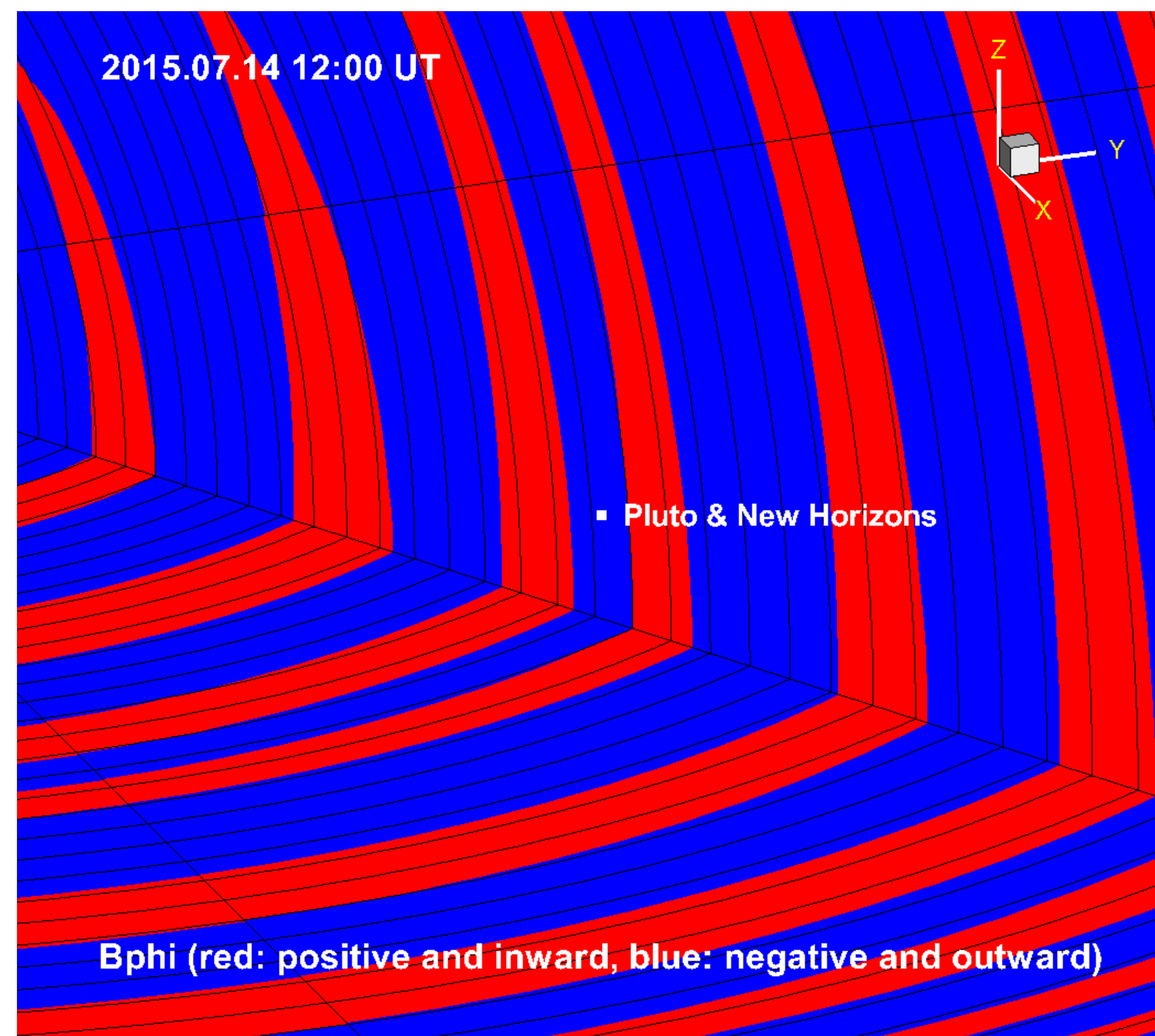


Figure 6. Model interplanetary magnetic field direction shown on the equatorial plane and on a vertical plane formed by the solar rotation axis and the Sun-Pluto line at the time of *NH*'s closest approach to Pluto

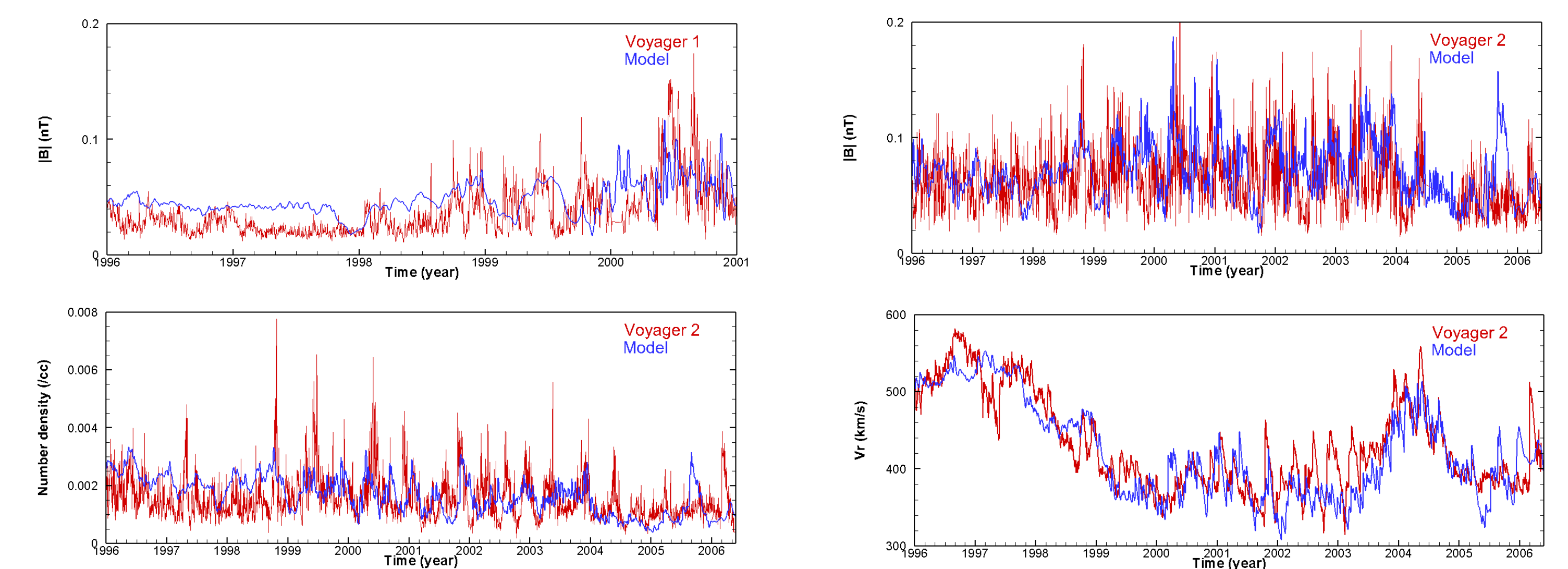


Figure 5. Model interplanetary magnetic field strength (nT) compared with *Voyager 1* and 2 data (top row), number density ( $\text{cm}^{-3}$ ), and radial velocity (km/s) compared with *Voyager 2* data (bottom row)

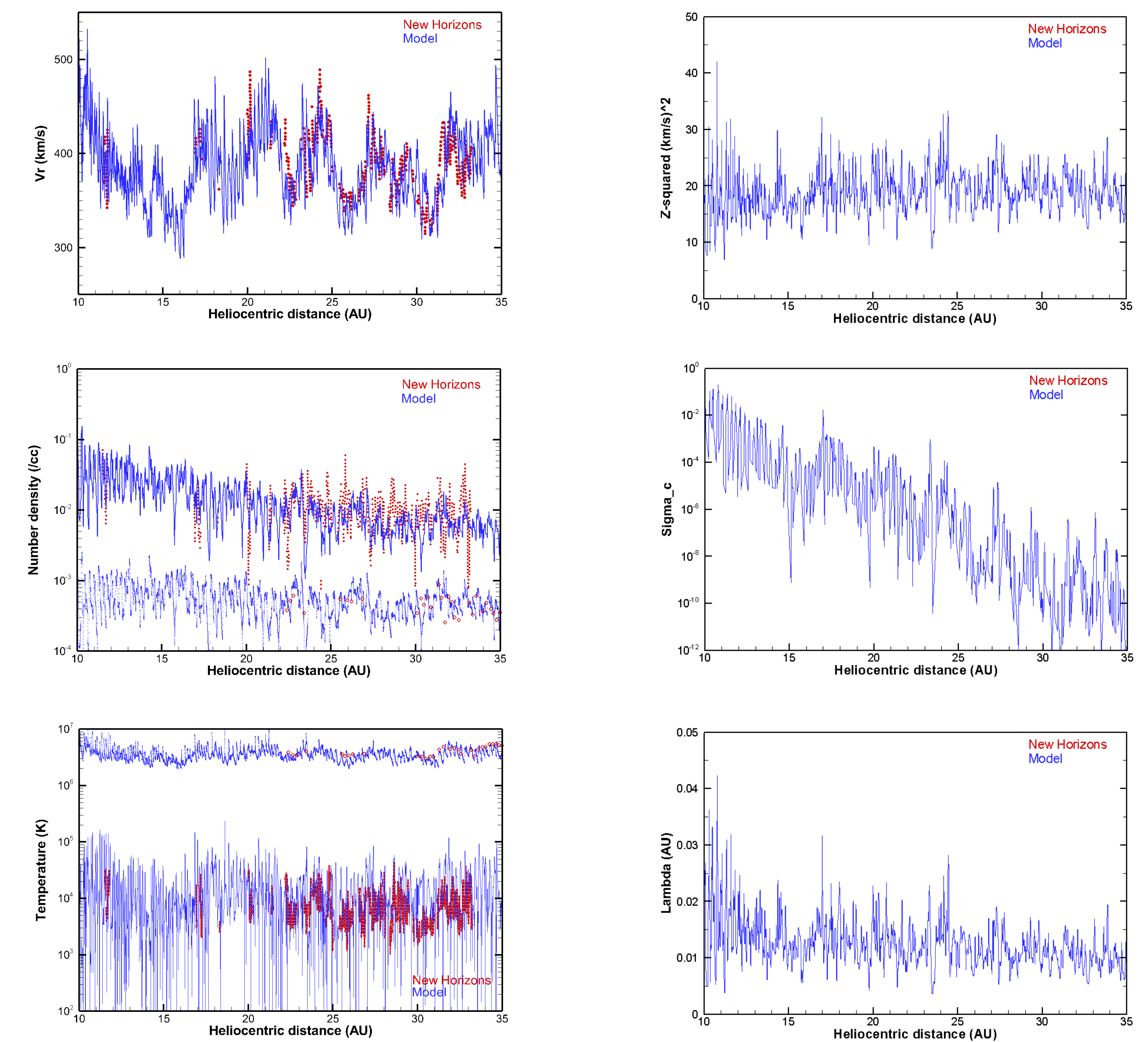


Figure 7. Model solar wind radial velocity, number density, and temperature are compared with *NH/SWAP* observations (Elliott et al. 2016) in the left column. Model interstellar pickup proton density and temperature are marked by open circles and compared with *NH/SWAP* observations (McComas et al. 2017). Turbulence parameters such as  $Z^2$  (total turbulent energy density in turbulent magnetic and velocity fluctuations),  $\sigma_c$  (cross helicity), and  $\lambda$  (correlation length) are shown in the right column.

## 4. Summary and Discussions

- 3-D multi-fluid simulation of the solar wind, interstellar pickup ions, and turbulence between 1 and 80 AU
- Time-dependent boundary conditions from OMNI data at low-to-mid heliographic latitudes
- Latitudinal extent of the OMNI-driven boundary conditions varying as a function of time
- Model compares favorably with in-space observations of the solar wind and interstellar pickup ions by Ulysses, Voyager, and NH.
- Model applications include forecasting of interplanetary shock arrival at the outer planets such as Uranus and Neptune.
- Potential sources of uncertainty include symmetric PCHs and HCS tilt, and radial outflow with a spiral magnetic field at 1 AU.
- Alternate sources of time-varying boundary conditions (e.g., WSA, IPS tomography) may complement the OMNI-based approach.
- Future work will consider kinetic treatment of interstellar pickup ions as an alternate, more realistic approach to the fluid model.

## References

- Borovikov et al. 2008, *ASP Conference Series*, 385, 197  
Breech et al. 2008, *Journal of Geophysical Research*, 113, A08105  
Bzowski et al. 2009, *Space Science Reviews*, 143, 177  
Colella et al. 2007, *Journal of Physics: Conference Series*, 78, 012013  
Elliott et al. 2016, *Astrophysical Journal Supplement Series*, 223, 19  
Heerikhuisen et al. 2008, *ASP Conference Series*, 385, 204  
Intriligator et al. 2012, *Journal of Geophysical Research*, 117, A06104  
Kim et al. 2014a, *ASP Conference Series*, 484, 91  
Kim et al. 2014b, *Journal of Geophysical Research*, 119, 7981-7997  
Kim et al. 2016, *Astrophysical Journal*, 832, 72  
Kim et al. 2017, *Astrophysical Journal Letters*, 843, L32  
Kryukov et al. 2012, *AIP Conference Series*, 1436, 48  
Lamy et al. 2017, *Journal of Geophysical Research*, 122, 3997  
McComas et al. 2015, *Astrophysical Journal Supplement Series*, 220, 22  
McComas et al. 2017, *Astrophysical Journal Supplement Series*, 233, 8  
Pogorelov et al. 2008, *ASP Conference Series*, 385, 180  
Pogorelov et al. 2011, *ASP Conference Series*, 444, 130  
Pogorelov et al. 2012, *AIP Conference Series*, 1436, 321  
Pogorelov et al. 2013, *Astrophysical Journal*, 772, 2  
Richardson et al. 2008, *Nature*, 454, 63  
Stone et al. 2005, *Science*, 309, 2017  
Stone et al. 2008, *Nature*, 454, 71

## Acknowledgments

This research was inspired by the *New Horizons* Flyby Modeling Challenge facilitated by Peter MacNeice at NASA/CCMC. This work is supported by the NSF PRAC award OCI-1144120 and related computer resources from the Blue Waters sustained-petascale computing project. Supercomputer time allocations were also provided on SGI Pleiades by NASA High-End Computing Program award SMD-15-5860 and on Stampede and Comet by NSF XSEDE project MCA07S033. T.K.K. and N.V.P. acknowledge support from the NSF SHINE project AGS-1358386, SAO subcontract SV4-84017, and NASA contract NNX14AF41G. The authors acknowledge use of the SPDF COHWeb database for *NH*, OMNI, *Ulysses*, and *Voyager* data. The heliospheric current sheet tilt data are from the John M. Wilcox Solar Observatory at Stanford University.