

Superposed Epoch Analysis of Nighttime Magnetic Perturbation Events Observed in Arctic Canada

Mark J. Engebretson¹, Lidiya Y. Ahmed^{1,2}, Viacheslav A. Pilipenko^{1,3}, Erik S. Steinmetz¹,
Mark B. Moldwin⁴, Martin G. Connors⁵, David H. Boteler⁶, James M. Weygand⁷, Shane
Coyle⁸, Shin Ohtani⁹, Jesper Gjerloev⁹, and Christopher T. Russell⁷

¹Department of Physics, Augsburg University, Minneapolis, MN

²Now at NASA/Goddard Space Flight Center, Greenbelt, MD

³Space Research Institute, Moscow, Russia

⁴Department of Climate and Space Sciences and Engineering, Ann Arbor, MI

⁵Athabasca University Observatories, Athabasca University, Athabasca, AB, Canada

⁶Geomagnetic Laboratory, Natural Resources Canada, Ottawa, ON, Canada

⁷Department of Earth Planetary and Space Sciences, University of California, Los Angeles, CA

⁸Bradley Department of Electrical and Computer Engineering, Virginia Tech, Blacksburg, VA

⁹Johns Hopkins University Applied Physics Laboratory, Laurel, MD

Contents of this file

Figures S1 – S5

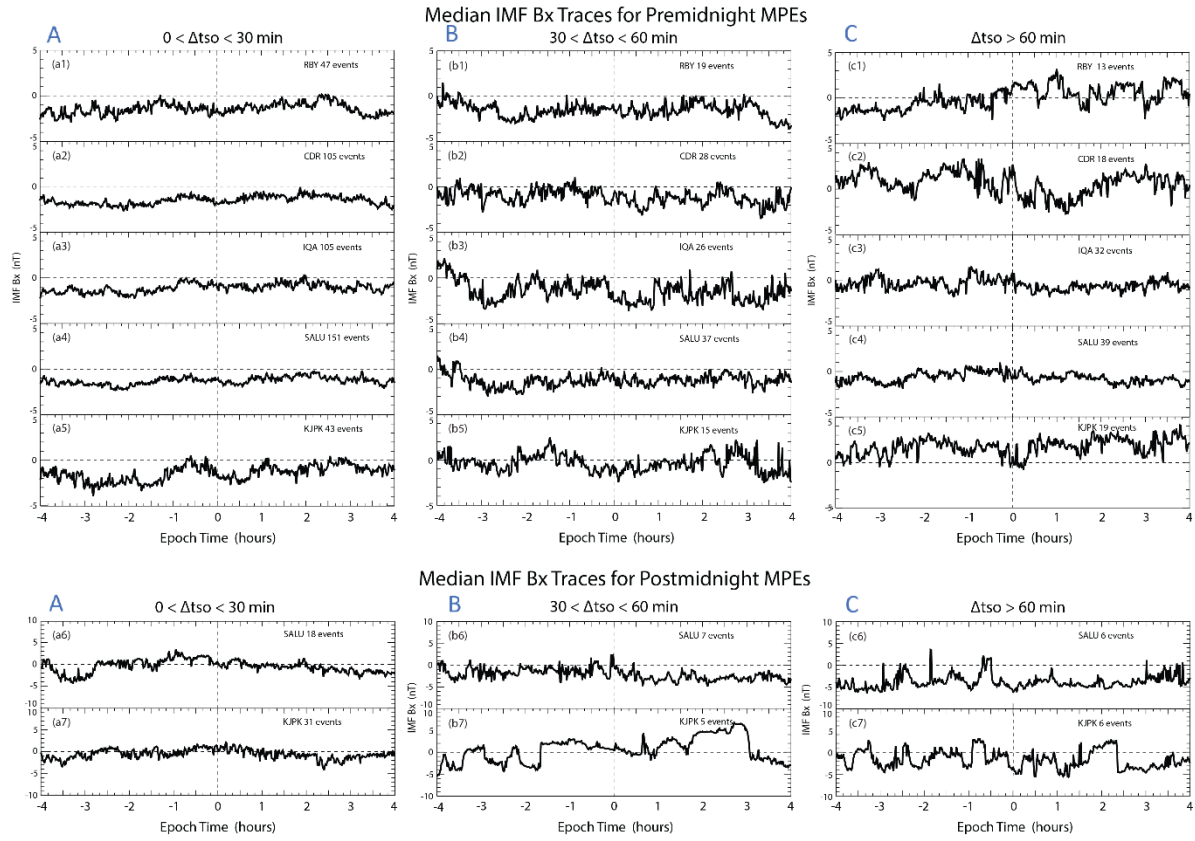


Figure S1. Superposed epoch plots of the medians of the Bx component of the IMF as a function of time from 4 hours before to 4 hours after the time of MPes, as in Figure 4.

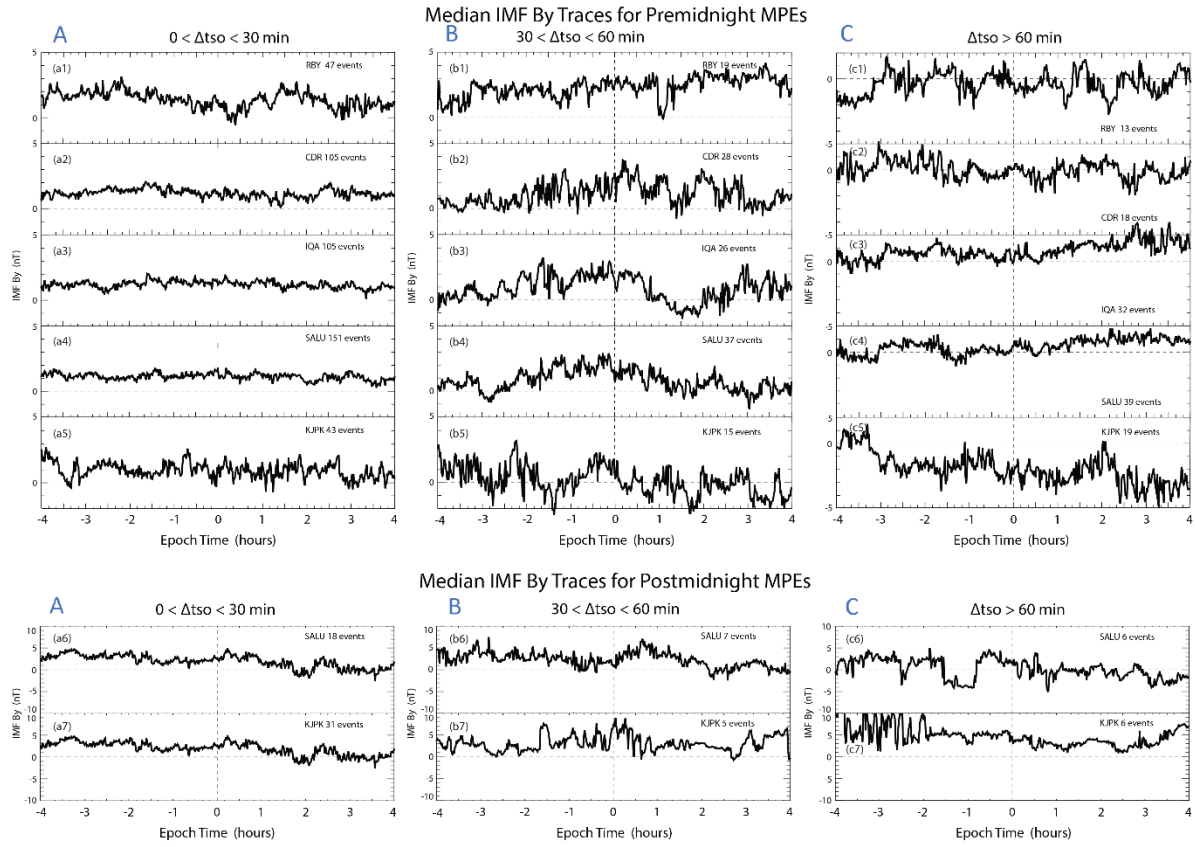


Figure S2. Superposed epoch plots of the medians of the By component of the IMF as a function of time from 4 hours before to 4 hours after the time of MPEs, as in Figure 4.

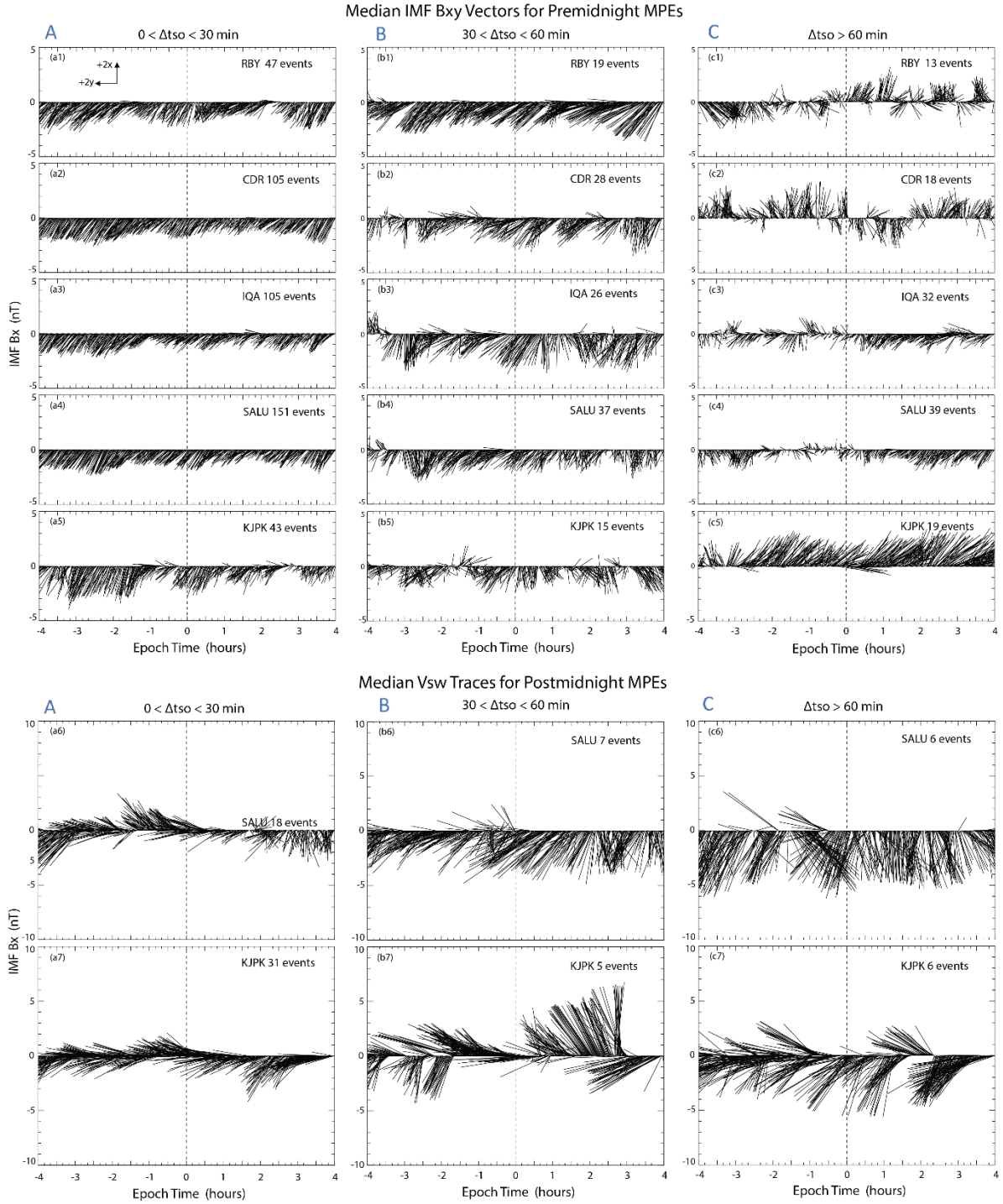


Figure S3. Superposed epoch plots of the medians of the component (in the GSM coordinate system) of the interplanetary magnetic field in the ecliptic plane for all six MLT and time delay categories, as a function of time from 4 hours before to 4 hours after the time of MPEs, as in Figure 4. As is indicated in the legend in the upper left panel, positive GSM Bx is upward, and positive GSM By is toward the left.

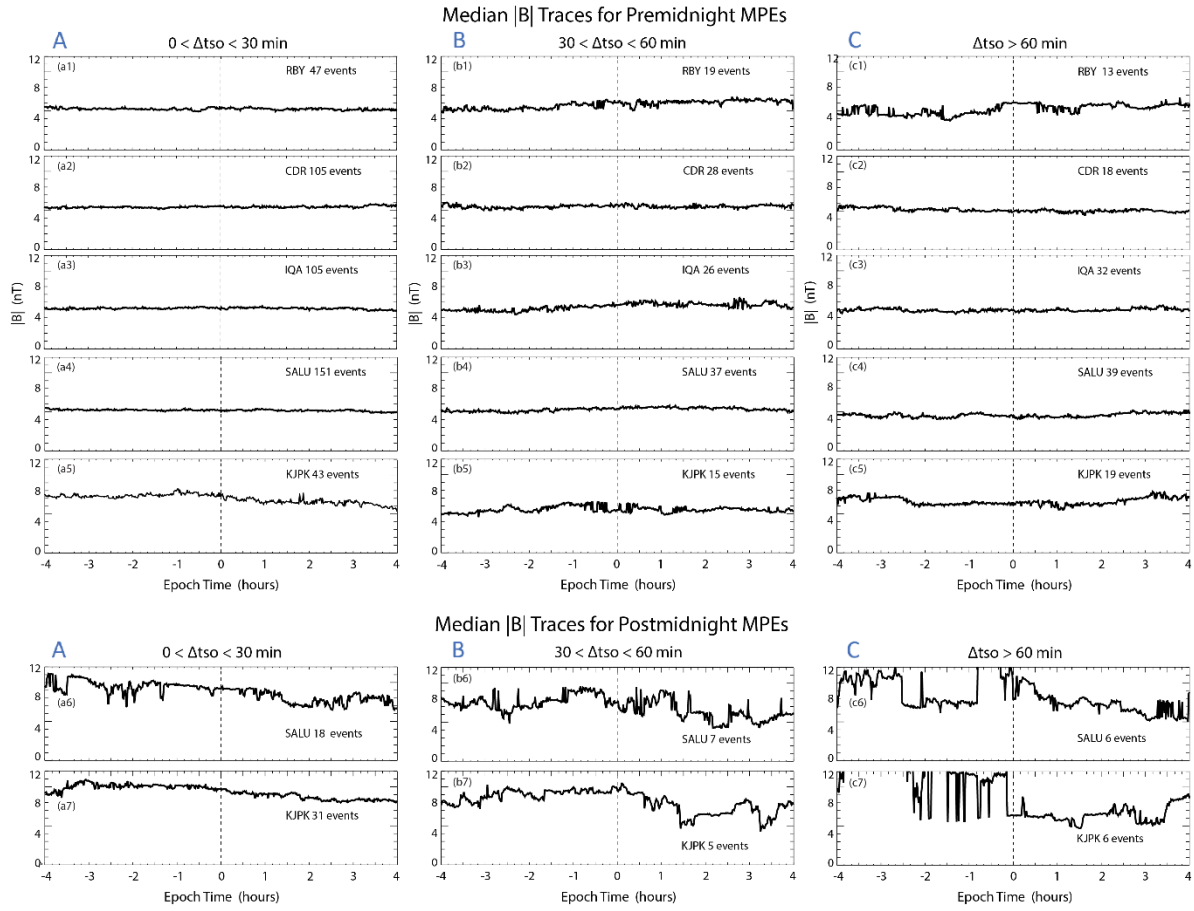


Figure S4. Superposed epoch plots of the medians of the magnitude of the interplanetary magnetic field $|B|$ for all six MLT and time delay categories, as a function of time from 4 hours before to 4 hours after the time of MPEs, as in Figure 4.

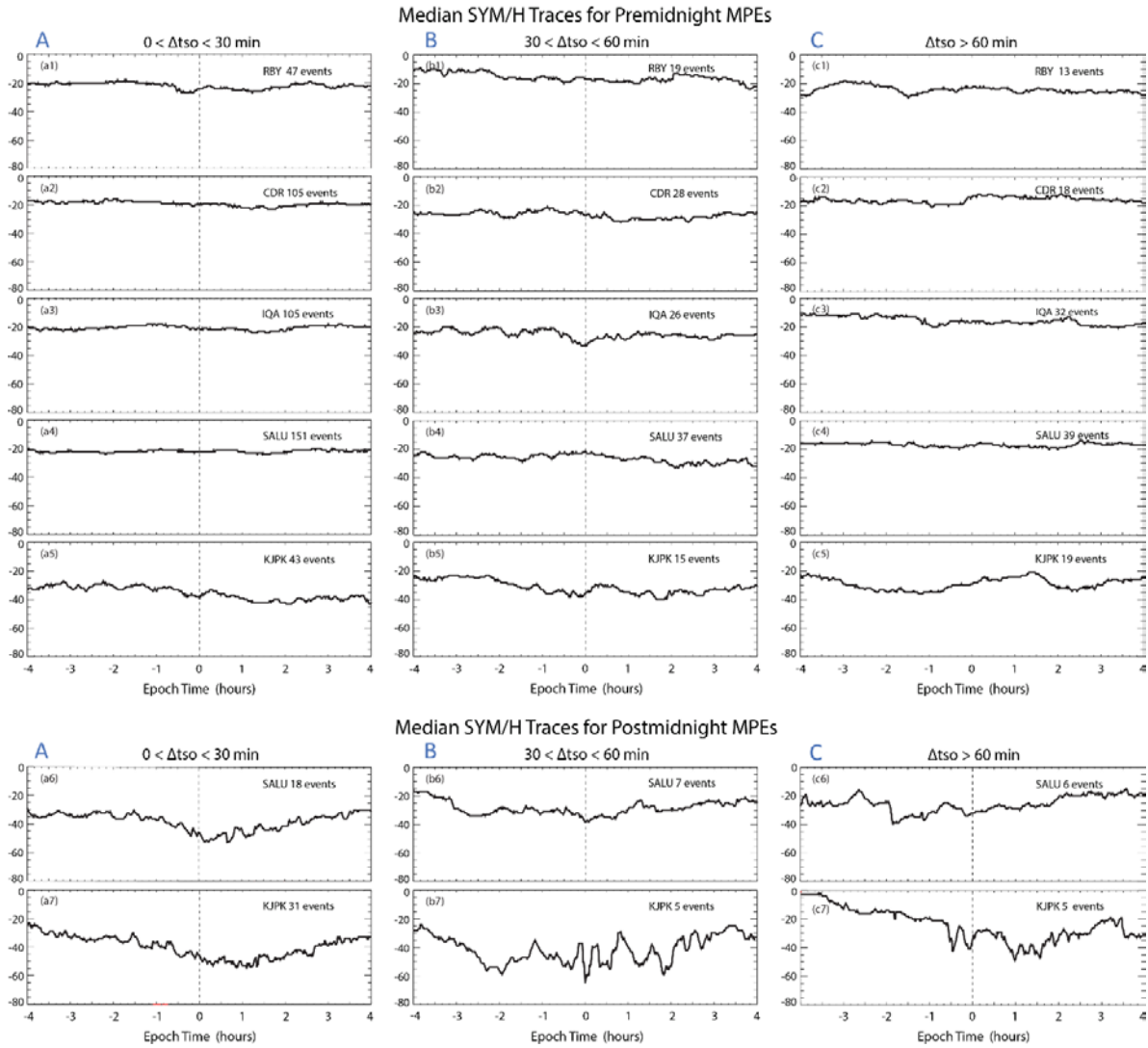


Figure S5. Superposed epoch plots of the medians of the SYM/H index for all six MLT and time delay categories, as a function of time from 4 hours before to 4 hours after the time of MPEs, as in Figure 4.