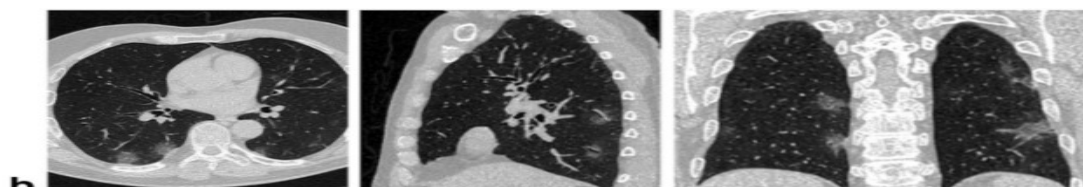




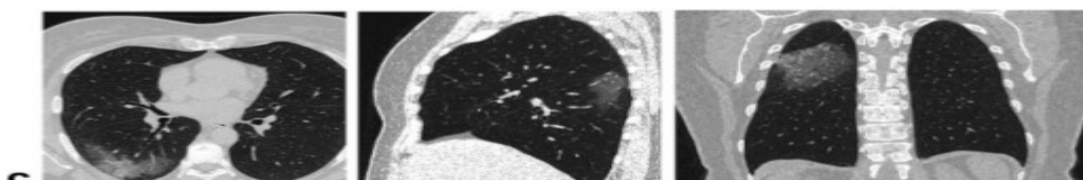
**a**

**CT Score 0. 0% of RLL**



**b**

**CT Score 1. < 5 % of RLL**



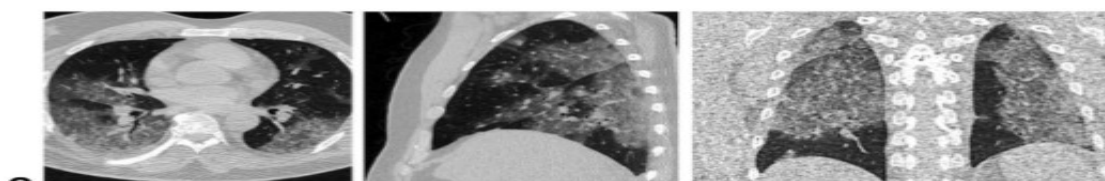
**c**

**CT Score 2. 5-25 % of RLL**



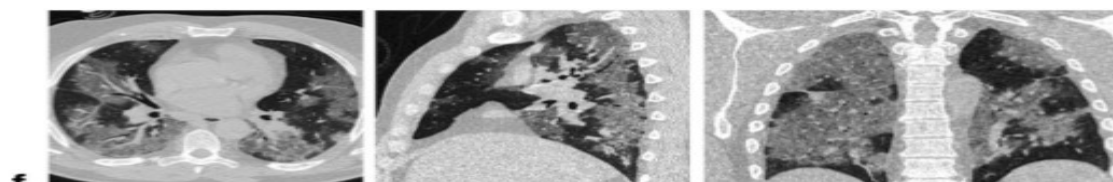
**d**

**CT Score 3. 26-50 % of RLL**



**e**

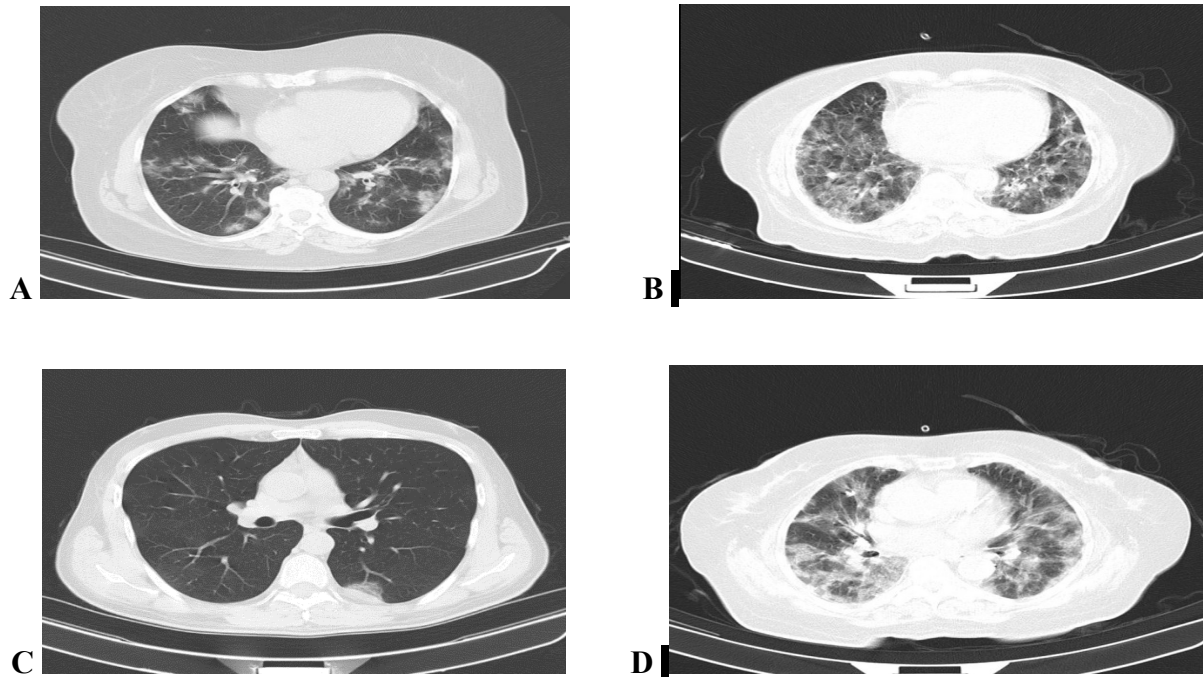
**CT Score 4. 51-75 % of RLL**



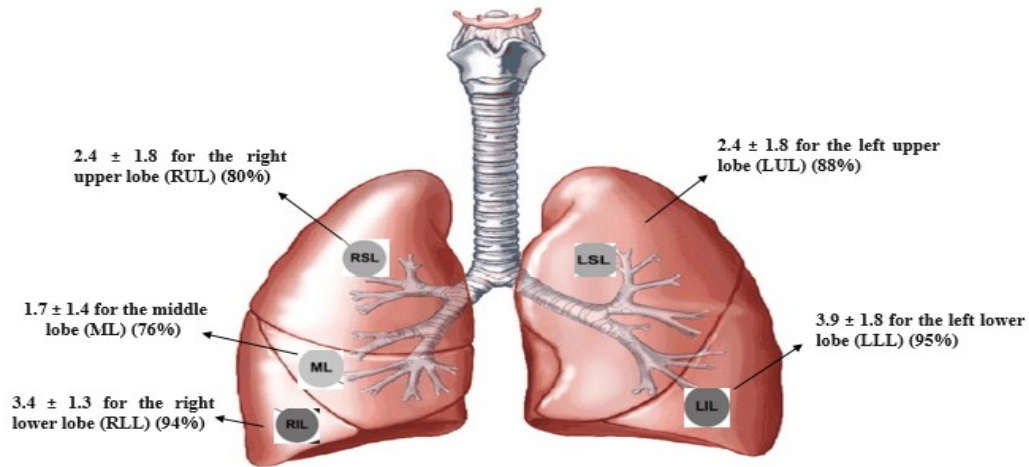
**f**

**CT Score 5. 76-100 % of RLL**

**Fig. 1** Different CT score of RLL involvement in COVID-19 pneumonia on axial, sagittal, and coronal images. 0% of RLL lobe involvement (a); <5% of RLL involvement (b); 20% of RLL involvement (c); 40% of RLL lobe involvement (d); 70% of RLL involvement (e); >75% of RLL involvement (f) [21].



**Fig. 2** Chest CT findings of COVID-19 pneumonia on axial images. GGO (A); crazy-paving pattern (GGO with superimposed inter- and interlobular septal thickening) (B); consolidation (C); GGO, crazy-paving pattern and consolidation (D).



**Fig. 3** Lobar CT scores of patients Covid-19, data are expressed as mean value  $\pm$  SD (% of occurrences of involvement for each lobe) (\*\*\*\* $p < 0.0001$ ). RUL, right upper lobe; ML, middle lobe; RLL, right lower lobe; LUL, left upper lobe; LLL, left lower lobe.