

# COVID-19-related pneumonia with a predominant lymphocyte fraction in bronchoalveolar lavage fluid

Tsukasa Ueda<sup>1</sup>, Taro Yoneda<sup>1</sup>, Hayato Koba<sup>1</sup>, Hiroko Morita<sup>1</sup>, Kazuyuki Kakeshita<sup>1</sup>, Hideharu Kimura<sup>2</sup>, and Kazuo Kasahara<sup>3</sup>

<sup>1</sup>Komatsu Municipal Hospital

<sup>2</sup>Kanazawa University School of Medicine, Department of Respiratory Medicine

<sup>3</sup>Kanazawa University School of Medicine

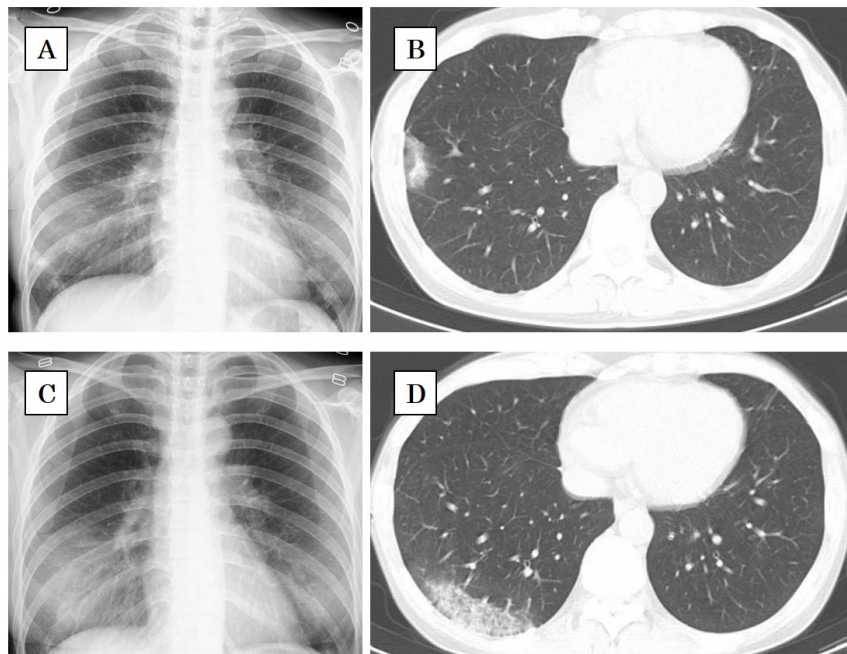
April 25, 2021

## Abstract

A 48-year-old woman, considered as a close contact of her husband who was diagnosed with COVID-19. She was clinically diagnosed with COVID-19-related pneumonia because of a positive antibody test. Her BALF contained an elevated lymphocyte fraction, which might explain why steroids are effective against COVID-19-related pneumonia.

## Hosted file

\begin{CJK}{UTF8}{gbsn}\end{CJK}\selectlanguage{english}main\begin{CJK}{UTF8}{gbsn}.\end{CJK}\selectlanguage{english} available at <https://authorea.com/users/345725/articles/519450-covid-19-related-pneumonia-with-a-predominant-lymphocyte-fraction-in-bronchoalveolar-lavage-fluid>



## Hosted file

Table1\begin{CJK}{UTF8}{gbsn}.\end{CJK}\selectlanguage{english}.xlsx available at <https://authorea.com/users/345725/articles/519450-covid-19-related-pneumonia-with-a-predominant-lymphocyte-fraction-in-bronchoalveolar-lavage-fluid>